

Fontaine Avenue Streetscape Improvements

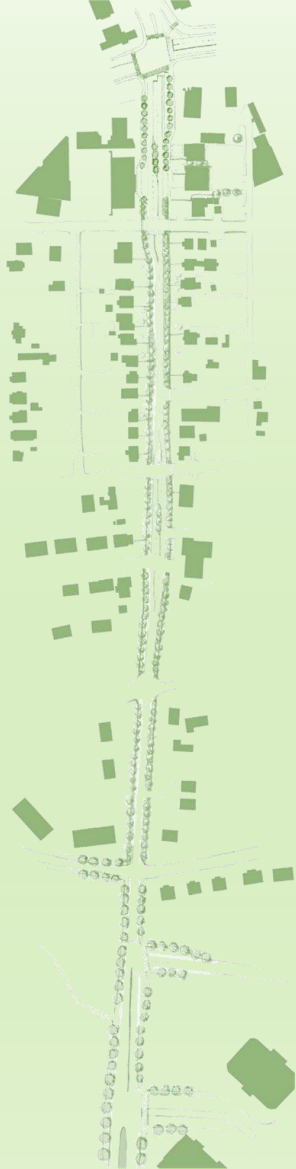
Steering Committee Meeting #5

October 20, 2020



*In Conjunction
With*

TOOLE
DESIGN



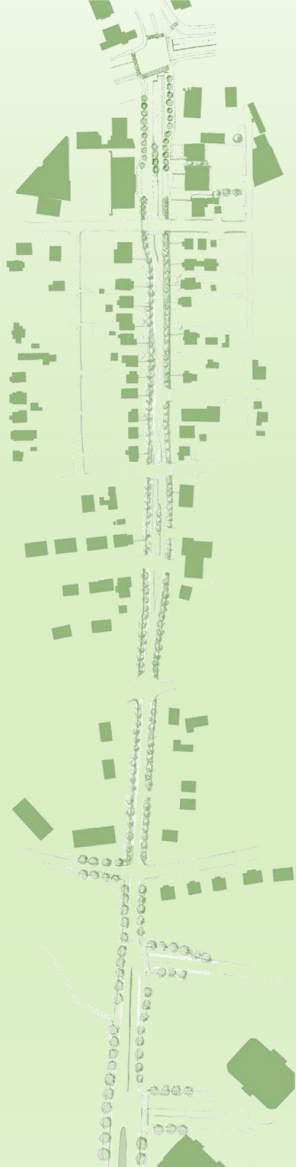
Agenda

- Project Update
 - Review
 - Overall
 - Renderings
 - Commercial Properties
 - Stormwater
- Structural Wall Treatments
- Selected Street Trees
- Next Steps
- Adjourn

Project Update

Review

Initial Project Schedule



Meeting Updates

- 11/15/18 - Steering Committee Meeting #1
- 1/31/19 - Public Information Meeting #1
- 2/25/19 – Technical Committee Meeting #1
- 2/28/19 - Steering Committee Meeting #2
- 3/14/19 - PLACE Task Force Meeting #1
- 3/25/19 - Steering Committee Meeting #3
- 4/18/19 - Public Open House #2
- 6/21/19 – Technical Committee Meeting #2
- 7/11/19 – PLACE Task Force Meeting #2
- 7/23/19 – Planning Commission Work Session
- 9/17/19 – *Steering Committee #4*
- 12/10/19 – Planning Commission – Approval of Comp Plan Compliance
- 1/6/20 – City Council – Accepted Planning Commission’s Recommendation
- 6/25/20 – Technical Committee Meeting #3
- 9/14/20 – Utility Field Inspection (UFI) Meeting
- **10/20/20 – Steering Committee Meeting #5**

Project Area

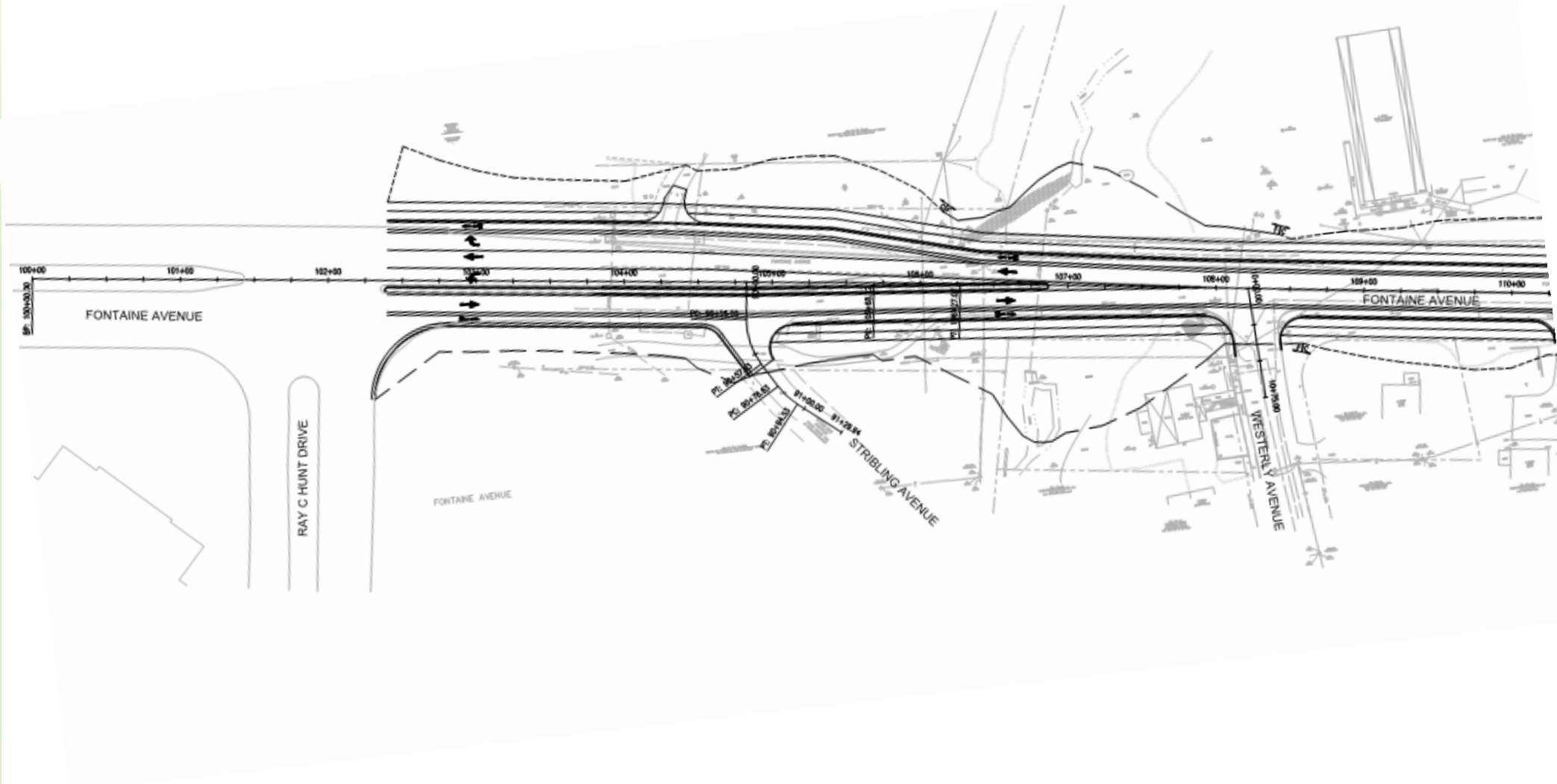
- Project Area as defined by the project SMARTSCALE application



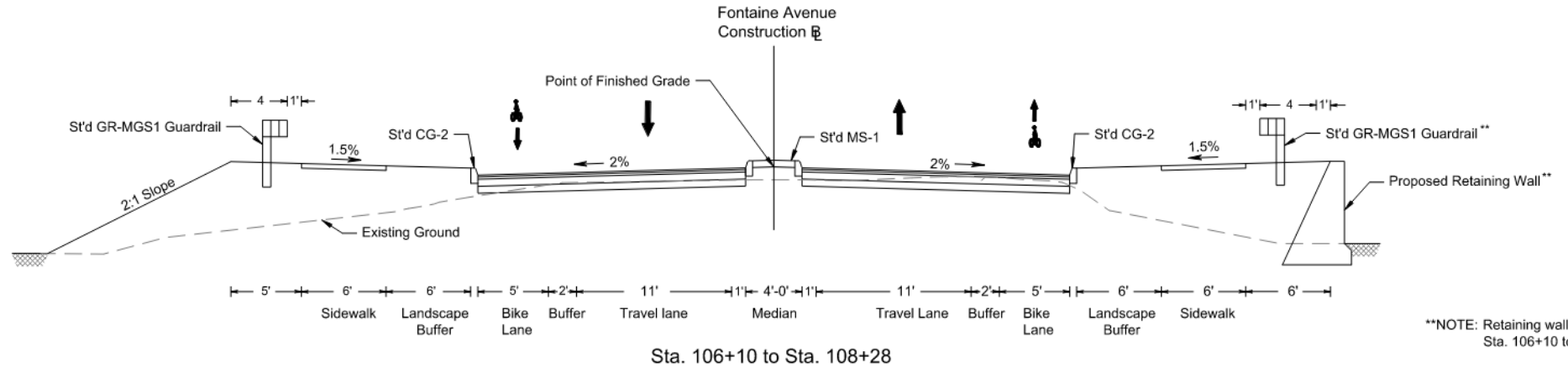
Project Update

Overall

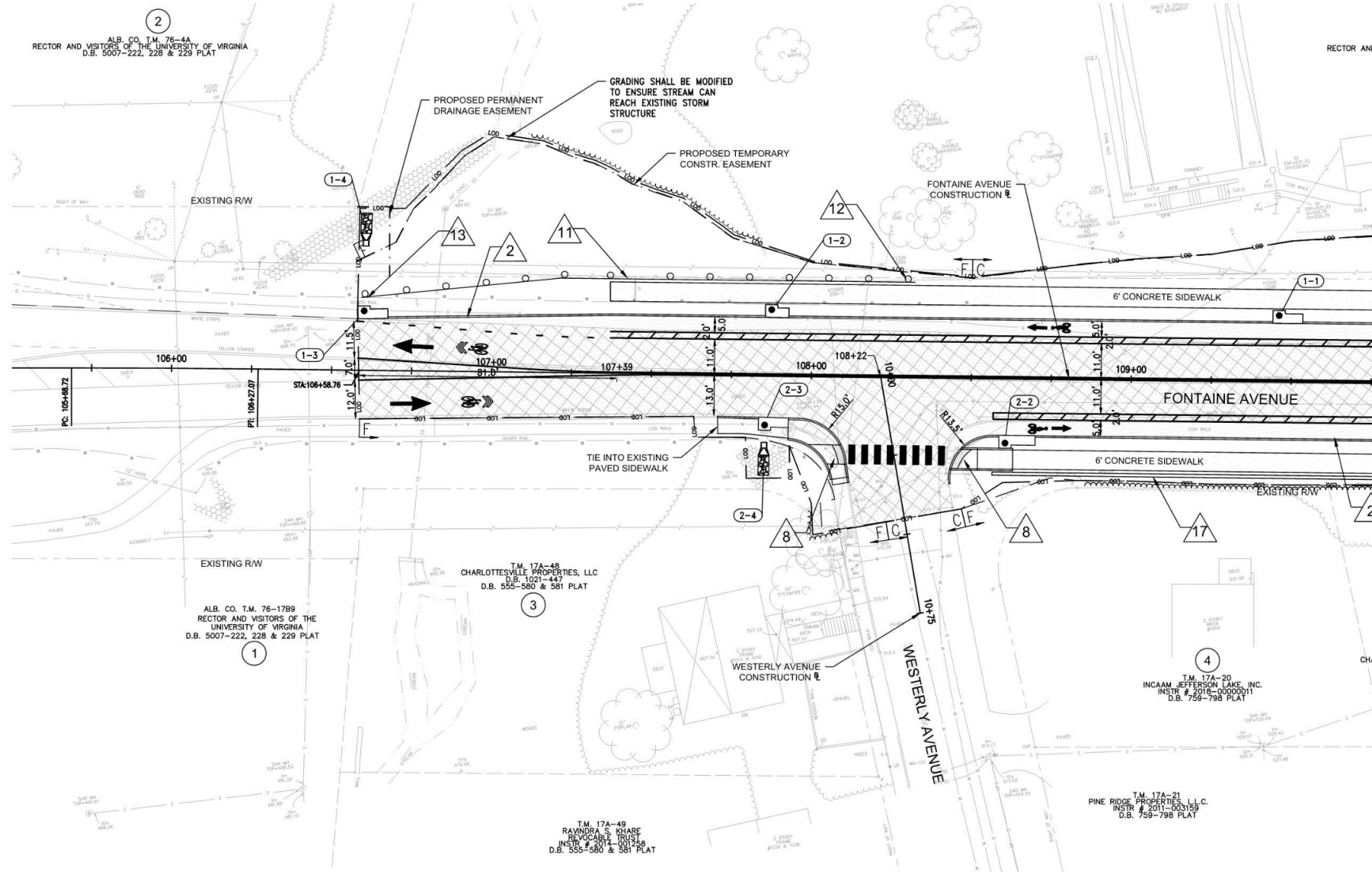
Project Update – 30% Plans



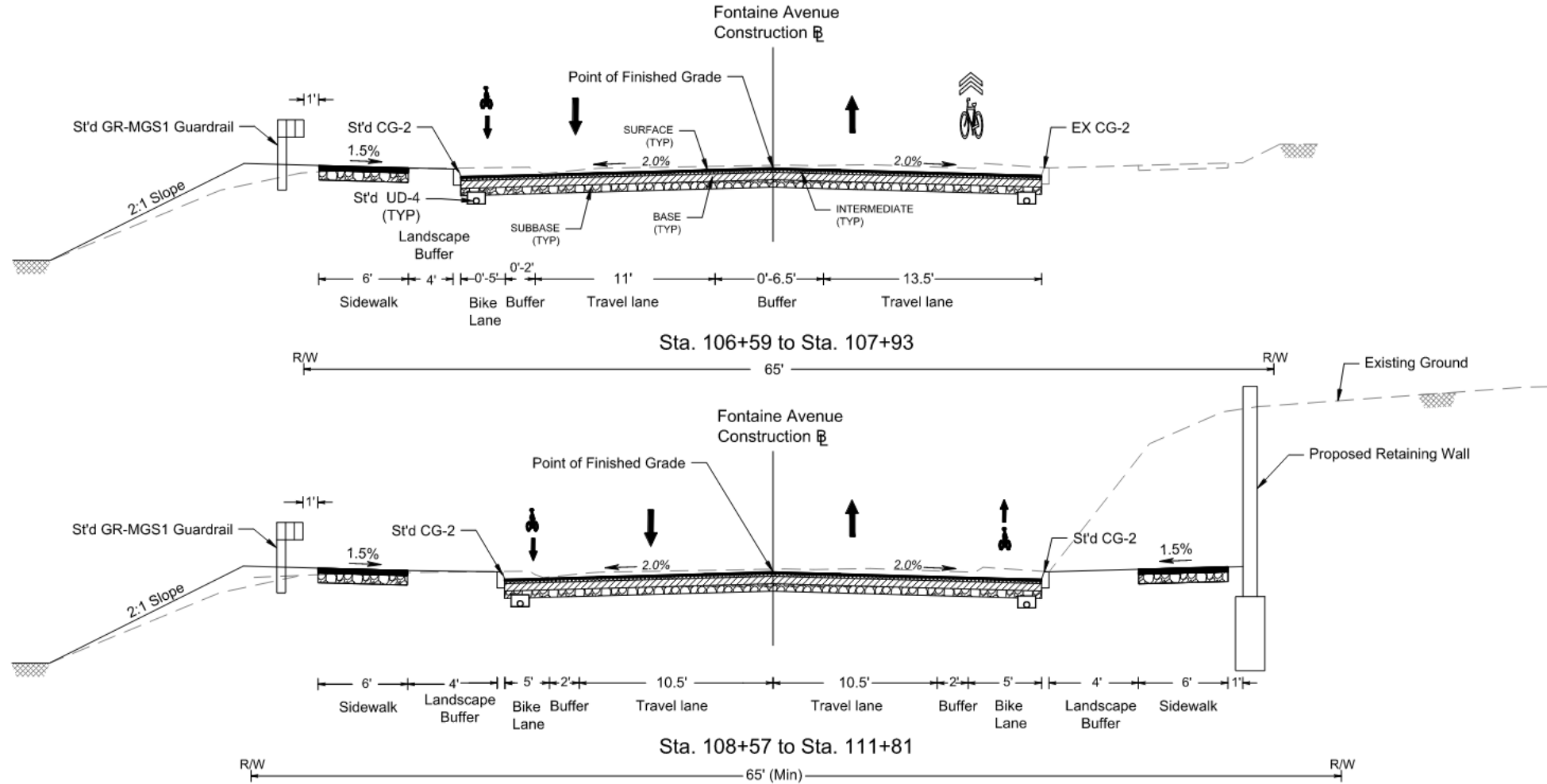
Project Update – 30% Plans



Project Update – 60% Plans



Project Update – 60% Plans



Project Update

Renderings





DESIGN CONCEPT OVERVIEW

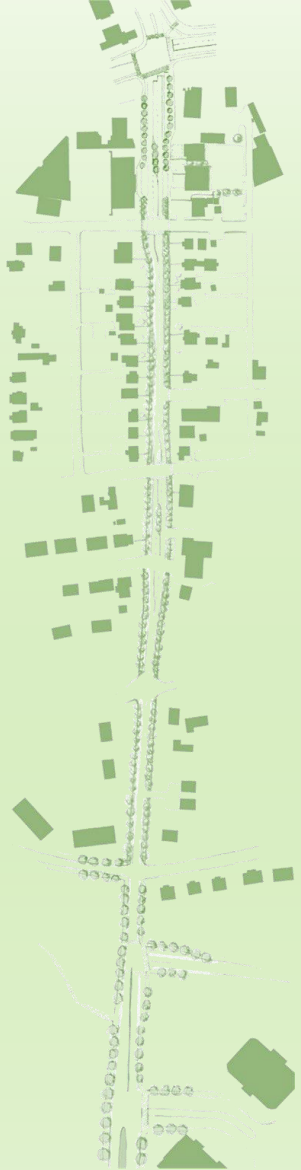
Project Update – Graphic Rendering

Project Update – Video Rendering

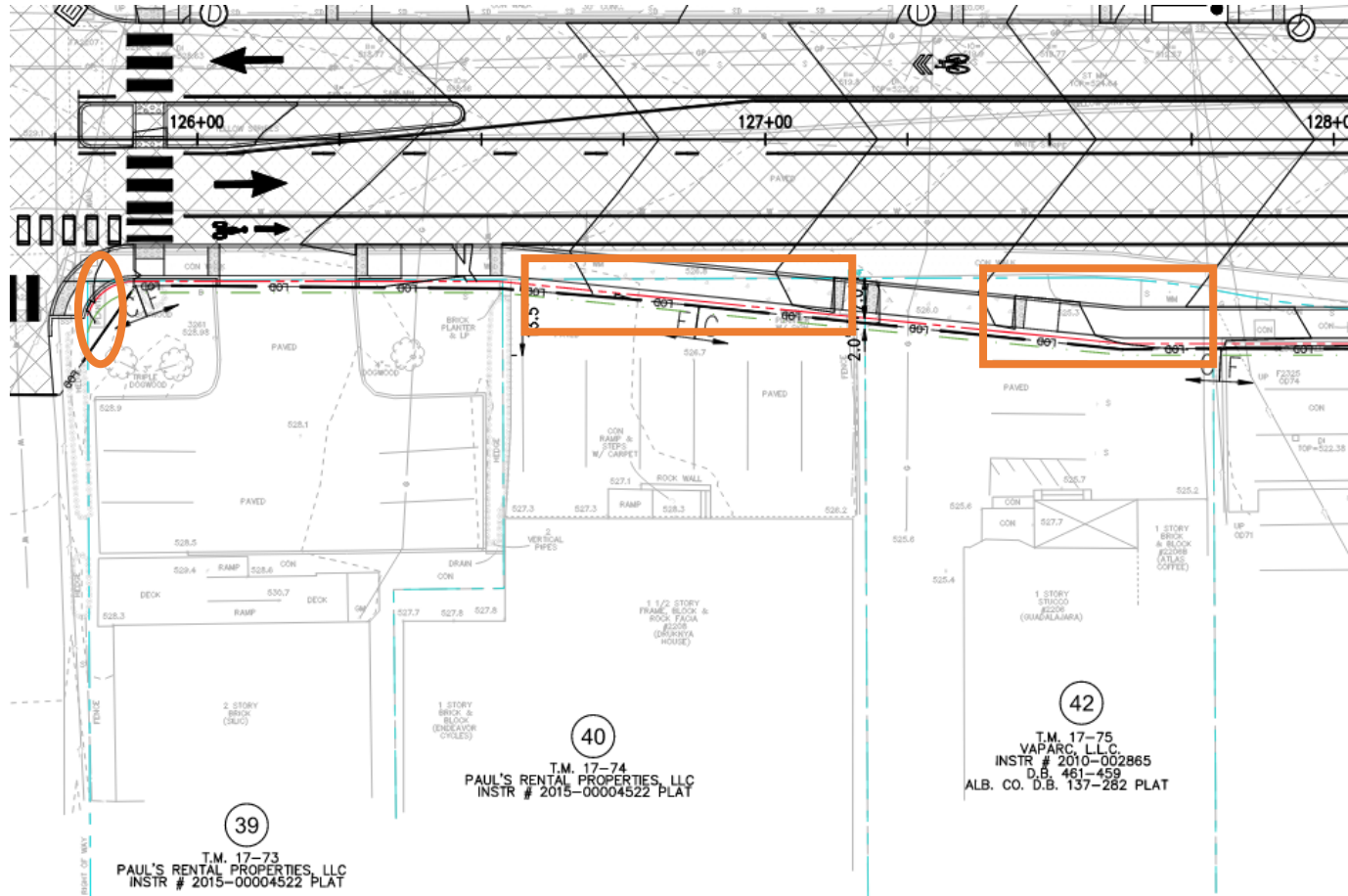


Project Update

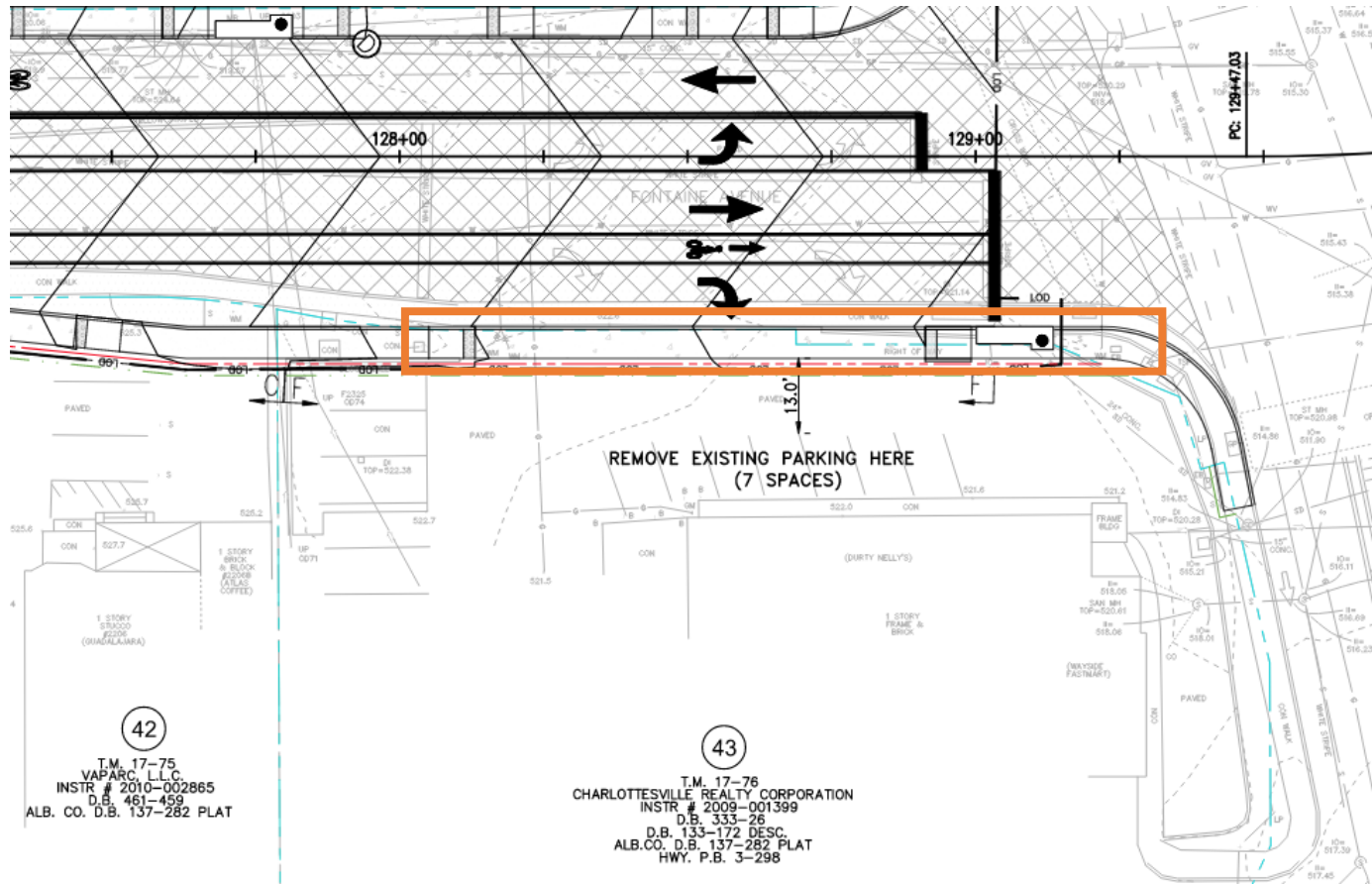
Commercial Properties

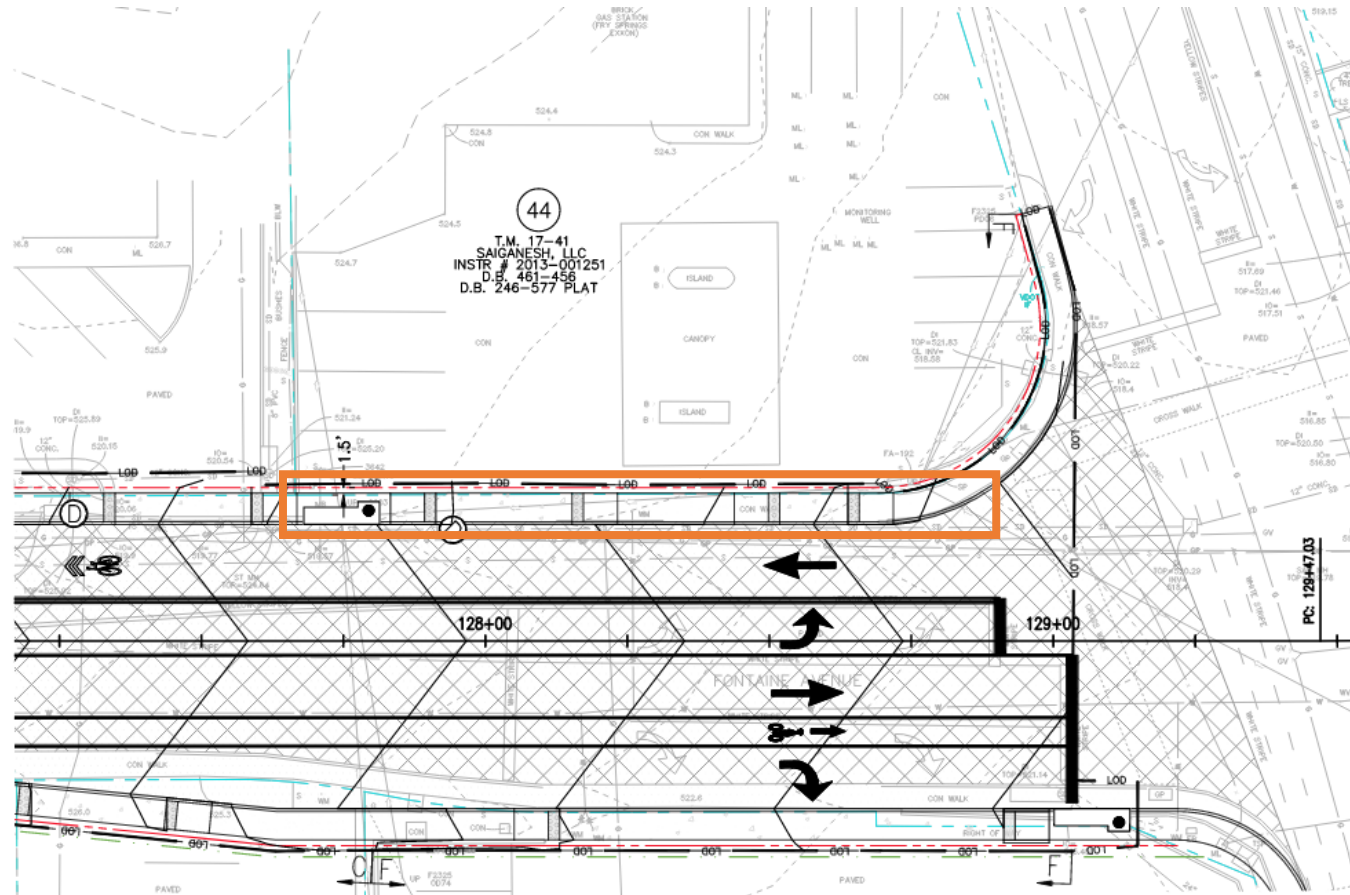


Project Updates – Commercial Properties



Project Updates – Commercial Properties

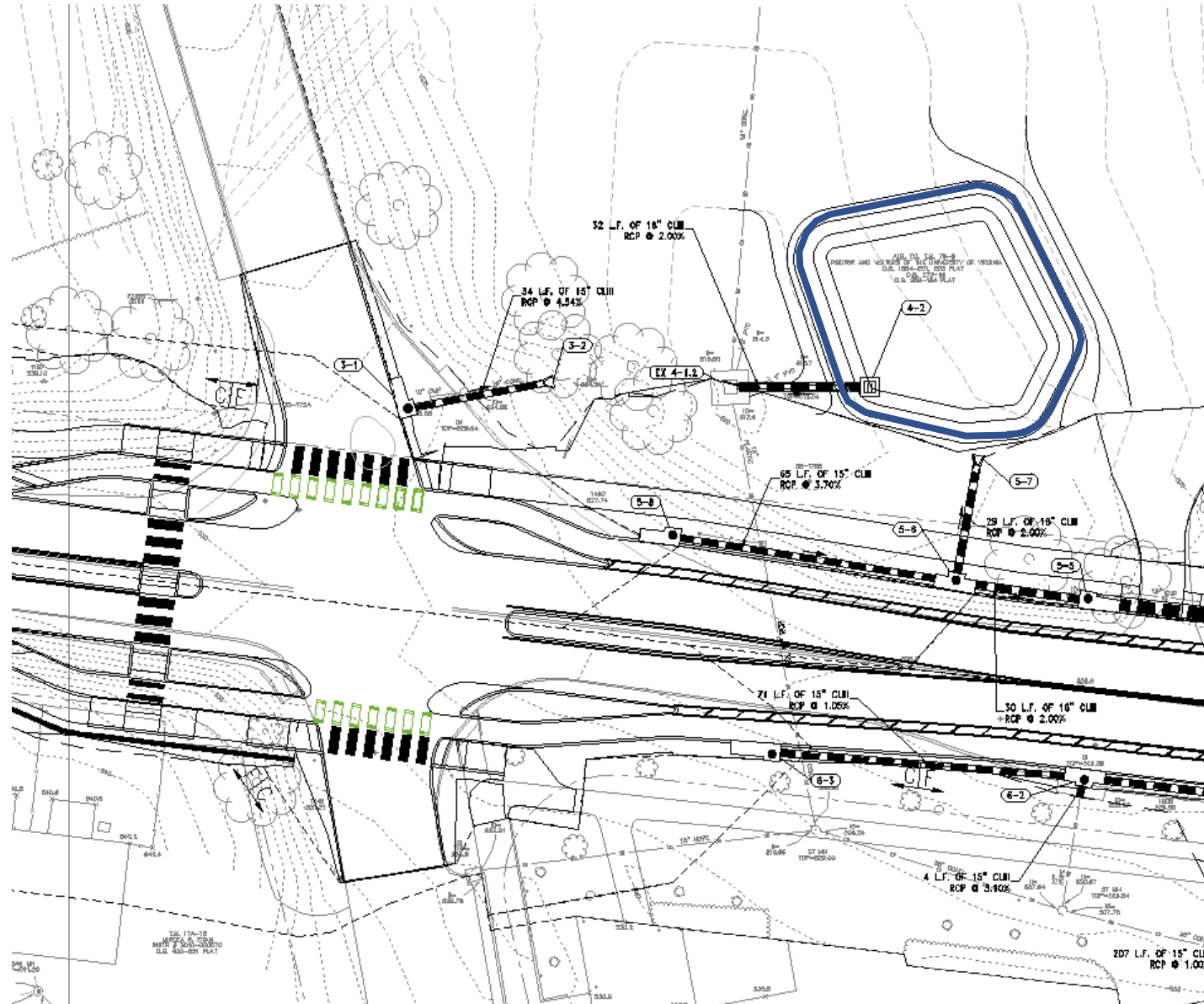




Project Update

Stormwater

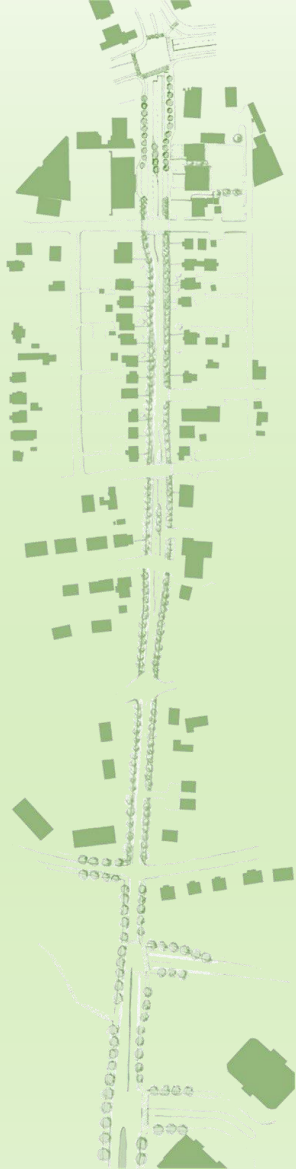
Stormwater – 60% Plans



- Quantity and Quality Requirements Addressed in the Basin
- Sized Quantity Piping for Cost Estimation Purposes

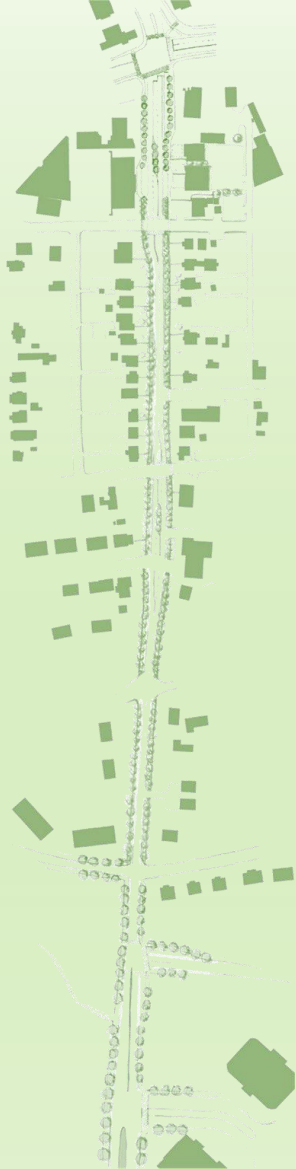
Stormwater – Post 60% Submission

- Met with UVA to discuss property impacts
 - UVA has future development planned for the Piedmont vicinity
- Considered many options, including:
 - Linear bioswales
 - Underground detention on City or commercial properties
 - Constructed wetlands
 - Retrofit of existing facilities
 - Purchasing credits for stormwater quality
 - Installing a BMP at one of the dead end streets
 - Filterra, Silva Cell, or other proprietary systems



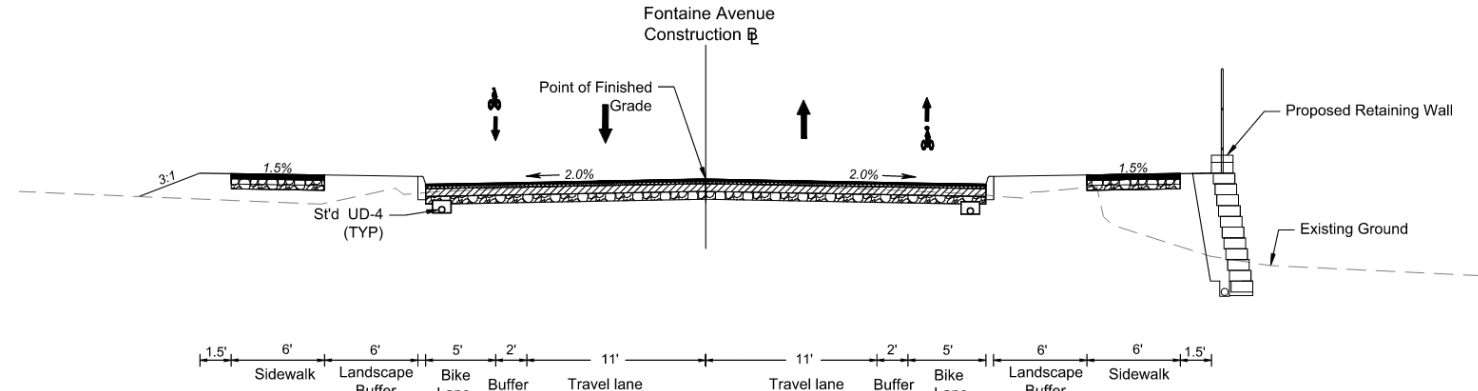
Stormwater – Post 60% Submission

- Water Quality
 - Purchase credits
- Water Quantity
 - Oversized piping within the proposed piping system

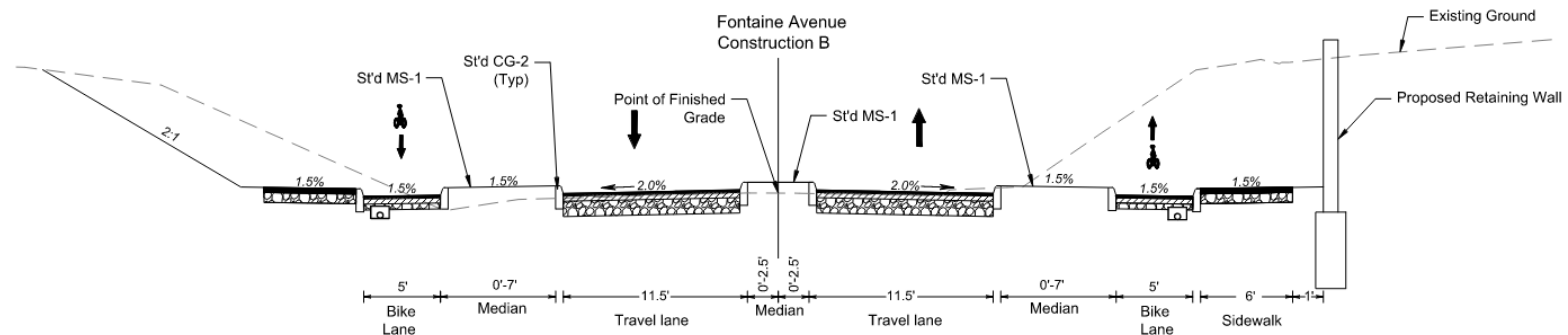


Structural Wall Treatments

Wall Preferences: Cross-Sections



Sta. 122+94 to Sta. 123+93
Fill Section



Sta. 111+81 to Sta. 112+78
Sta. 113+47 to Sta. 113+69
Cut Section

Wall Preferences: Proposed Fill Wall Type: Modular Block Wall



Rio Road, Charlottesville, Virginia.

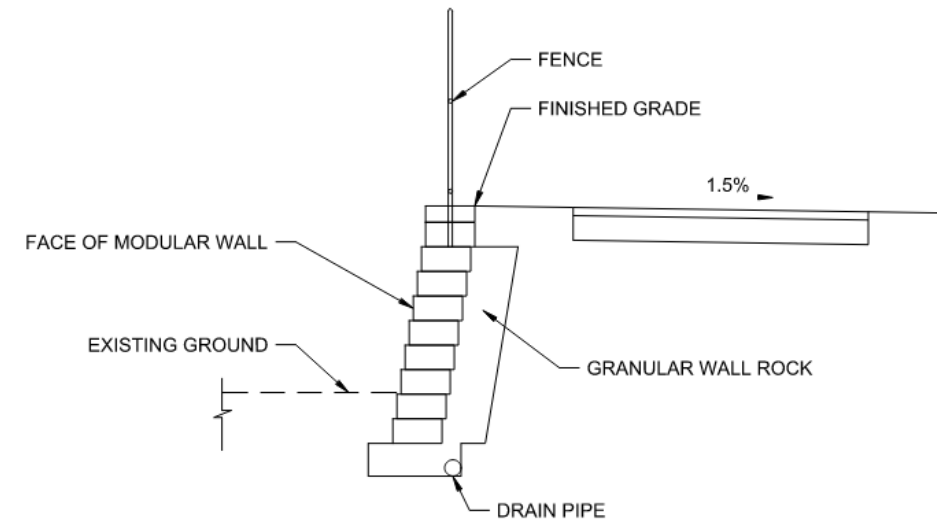


Granite Face. Holiday Inn Downtown Lynchburg, Virginia.

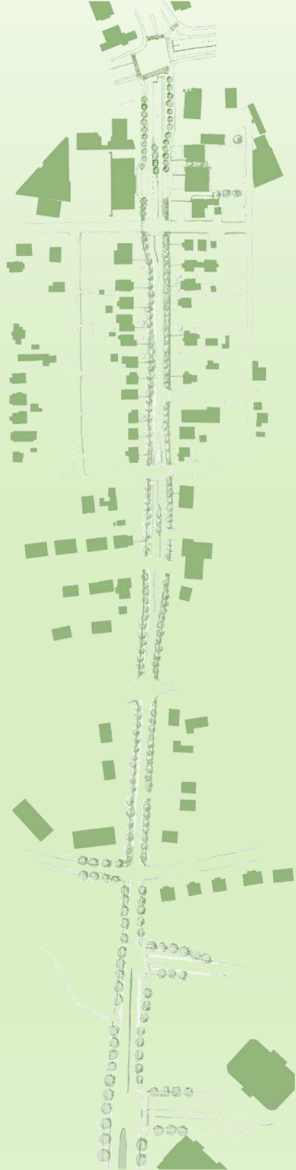
Wall Height for fill sections: 2 feet to 8 feet

Benefits:

- Cost Effective for walls up to 15 feet
- Shallow construction width
- Low maintenance
- Temporary shoring not required
- Allows for rapid construction



Wall Preferences: More Examples



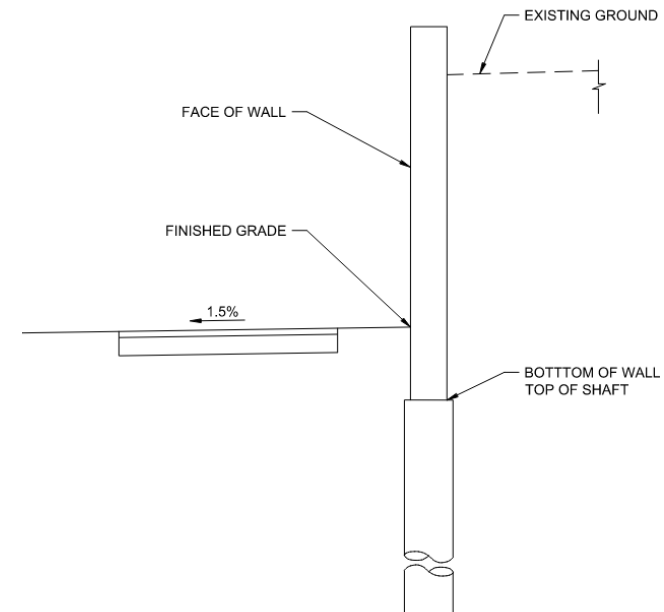
Wall Preferences: Proposed Cut Wall Type: Soldier Pile with Lagging



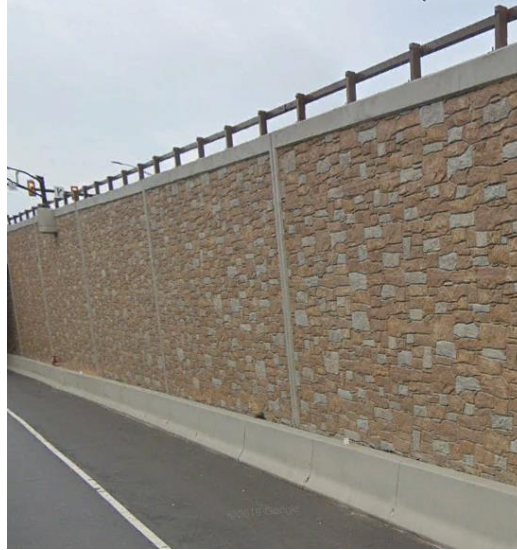
Wall Height for fill sections: 4' to 11'

Benefits:

- Cost Effective up to 15'
- Allows for top down construction
- No additional right of way behind wall required
- Minimize cut and fill
- Low maintenance
- Temporary shoring not required
- Multiple design aesthetics available



Wall Preferences: More Examples



Selected Street Trees

Selected Street Trees

Sawtooth Oak is one of the faster growing oaks that has long, narrow leaves with sawtooth-like edges around the leaf. Grows best in rich, humusy, well-drained soils. Tolerates heat and humidity and drought. Full sun.

Height: 40'-60'

Flower: Insignificant



Shademaster Honeylocust is easily grown in full sunlight. It is very adaptable to both dry and moist locations. It is not particular as to soil type or pH and is able to handle environmental salt. It is highly tolerant of urban pollution and will even thrive in inner city environments.

Height: 60'-80'

Flower: Greenish yellow - May/June



Selected Street Trees

American Linden is easily grown in average, medium, well-drained soils in full sun to part shade. Tolerates some drought. Prefers moist, fertile, well-drained loams. American linden is noted for its fragrant pale-yellow flowers in late spring, small nutlets with attached leafy wings and large ovate dark green leaves.

Height: 50'-80'

Flower: Pale Yellow – June



Carolina Silverbell is easily grown in average, medium, well-drained soil in full sun to part shade. Prefers moist, acidic, organically rich soils in part shade. May be grown as a large, multi-stemmed shrub or trained as single trunk tree.

Height: 30'-40'

Flower: White - April



Selected Street Trees

Little Bluestem is easily grown in average, dry to medium moisture, well-drained soil in full sun. Tolerates a wide range of soil conditions. Tolerates clay soils and occasional inundation. Performs well in poor soils. Good drought resistance once established. Tolerates high heat and humidity. Cut to the ground in late winter to early spring.

Height: 2'-4'

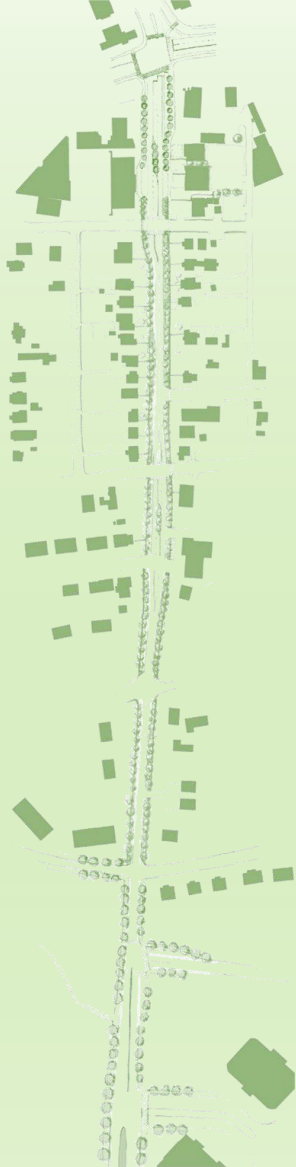
Flower: Purplish bronze - August to February



Nepeta 'Psike' LITTLE TRUDY is easily grown in average, dry to medium moisture, well-drained soils in full sun to light shade. Thrives in dry soils and is tolerant of drought. Shear flower spikes after initial flowering to promote continued bloom.

Height: 0.75'-1'

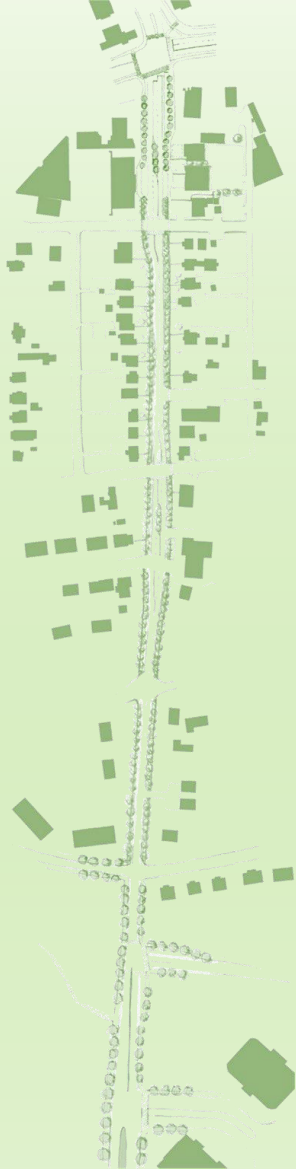
Flower: Lavender- May to September



Next Steps

Next Steps

- December 2020 – Location and Design Public Hearing
- January / February 2021 – City Council Review and Design Approval





Fontaine
Streetscape

Thank you!



*In Conjunction
With*

TOOLE
DESIGN