



Fontaine Avenue Streetscape Improvements

PLACE Design Task Force

March 14, 2019

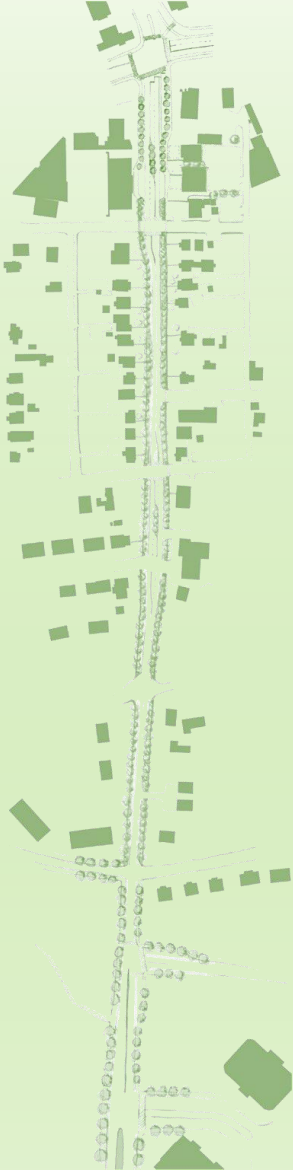


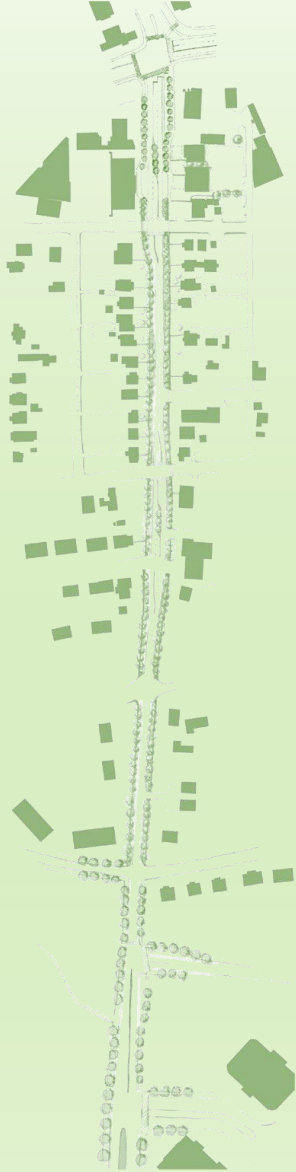
*In Conjunction
With*

TOOLE
DESIGN

Agenda

- Welcome
- Project Background
- Public Workshop
- Steering Committee
- Next Steps





Project Background

Project Area

- Project Area as defined by the project SMARTSCALE application



Fontaine Avenue Streetscape Improvements

- Regional and local benefits:
 - **Improved access** to:
 - ▶ US-29
 - ▶ UVA
 - ▶ University Health System
 - **Connect** to proposed bicycle and pedestrian facilities to Fontaine Research Park and beyond
 - **Increase opportunities for walking, bicycling, and the use of other transit**



Project Budget

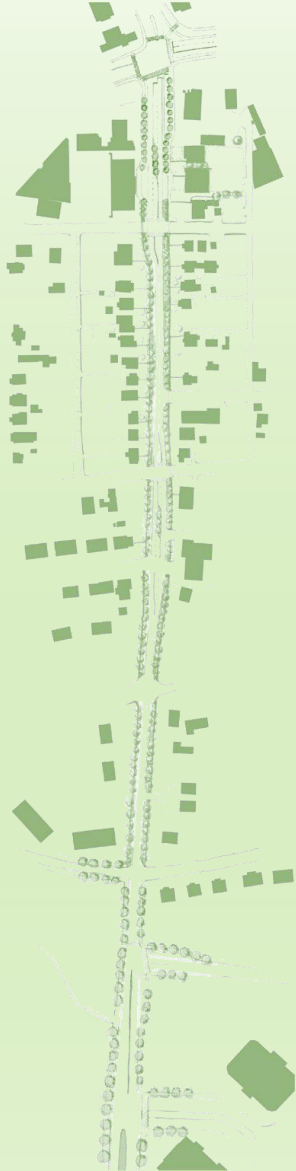
- PE (Survey, Environmental, Design)= \$1,200,000
- RW (Right of Way and Easement Acquisition, Utility Relocation) = \$3,700,000
- CN (Construction, Oversight, Inspection, Contingencies) = \$6,800,000

- TOTAL PROPOSED PROJECT FUNDING = \$11,700,000

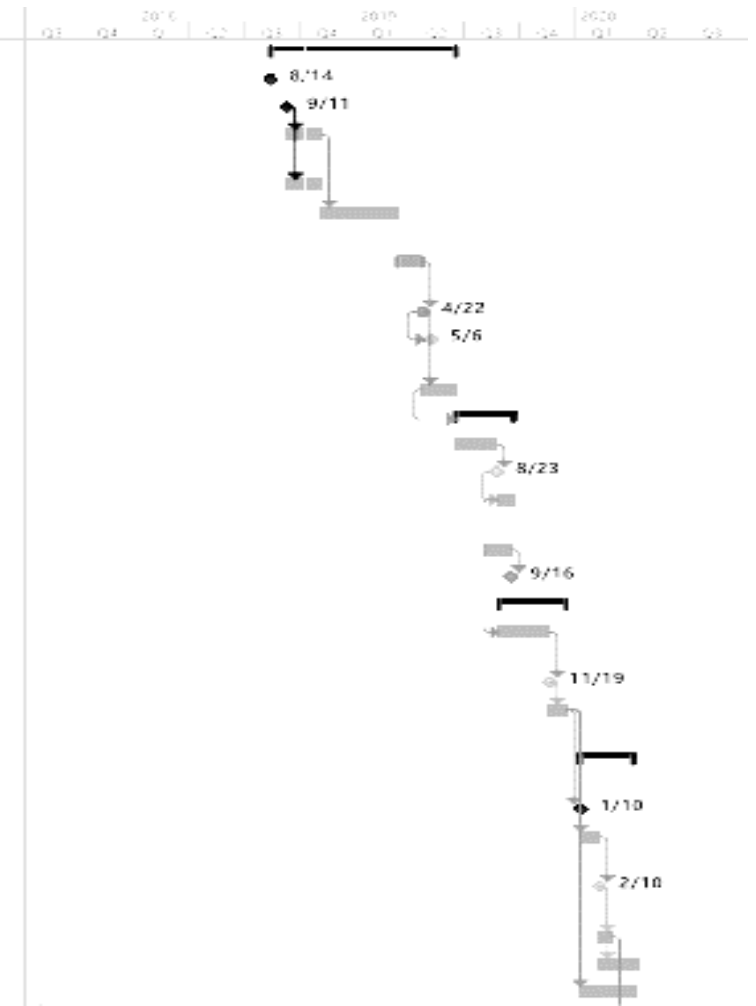
- Project Is Fully Funded Through Smartscale (HB2)



Initial Project Schedule










ID	Task	Task Name	Duration	Start	End	Phase
1	CONCEPT DEVELOPMENT	Concept Development				CONCEPTUAL DEVELOPMENT
2	CONCEPT DEVELOPMENT	Notice to Proceed				CONCEPTUAL DEVELOPMENT
3	CONCEPT DEVELOPMENT	Project Kickoff Meeting				CONCEPTUAL DEVELOPMENT
4	CONCEPT DEVELOPMENT	Preliminary Site and Data Collection				CONCEPTUAL DEVELOPMENT
5	CONCEPT DEVELOPMENT	Traffic Analysis	50 days			CONCEPTUAL DEVELOPMENT
6	PRELIMINARY DESIGN	Preliminary Concept Development				PRELIMINARY DESIGN
7	PRELIMINARY DESIGN	Prepare for Public Workshop				PRELIMINARY DESIGN
8	PRELIMINARY DESIGN	Public Workshop				PRELIMINARY DESIGN
9	PRELIMINARY DESIGN	Submit 30% Plans	30 days			PRELIMINARY DESIGN
10	DESIGN DEVELOPMENT	Refine Alternatives				DESIGN DEVELOPMENT
11	DESIGN DEVELOPMENT	Preliminary Design				DESIGN DEVELOPMENT
12	DESIGN DEVELOPMENT	Preliminary Design				DESIGN DEVELOPMENT
13	DESIGN DEVELOPMENT	Submit 60% Plans	30 days			DESIGN DEVELOPMENT
14	RIGHT OF WAY AND UTILITIES	City of Charlotte VDOT Review				RIGHT OF WAY AND UTILITIES
15	RIGHT OF WAY AND UTILITIES	Prepare for Public Workshop				RIGHT OF WAY AND UTILITIES
16	RIGHT OF WAY AND UTILITIES	Public Workshop				RIGHT OF WAY AND UTILITIES
17	RIGHT OF WAY AND UTILITIES	Detailed Design - 60%				RIGHT OF WAY AND UTILITIES
18	RIGHT OF WAY AND UTILITIES	Prepare Detailed Design (60% RfI)	50 days			RIGHT OF WAY AND UTILITIES
19	RIGHT OF WAY AND UTILITIES	Submit 60% Plans				RIGHT OF WAY AND UTILITIES
20	FINAL DESIGN	City of Charlotte VDOT Review				FINAL DESIGN
21	FINAL DESIGN	Public Hearing and Way Authorization				FINAL DESIGN
22	FINAL DESIGN	Advertise Public Hearing	30 days			FINAL DESIGN
23	ADVERTISEMENT AND BIDDING	Prepare Public Hearing and Displays				ADVERTISEMENT AND BIDDING
24	ADVERTISEMENT AND BIDDING	Post Signs and Holdings				ADVERTISEMENT AND BIDDING
25	ADVERTISEMENT AND BIDDING	Public Hearing and Way Authorization				ADVERTISEMENT AND BIDDING
26	ADVERTISEMENT AND BIDDING	Prepare Right of Way				ADVERTISEMENT AND BIDDING
27	ADVERTISEMENT AND BIDDING	Private Utility Coordination	30 days			ADVERTISEMENT AND BIDDING
	CONSTRUCTION PHASE					CONSTRUCTION PHASE



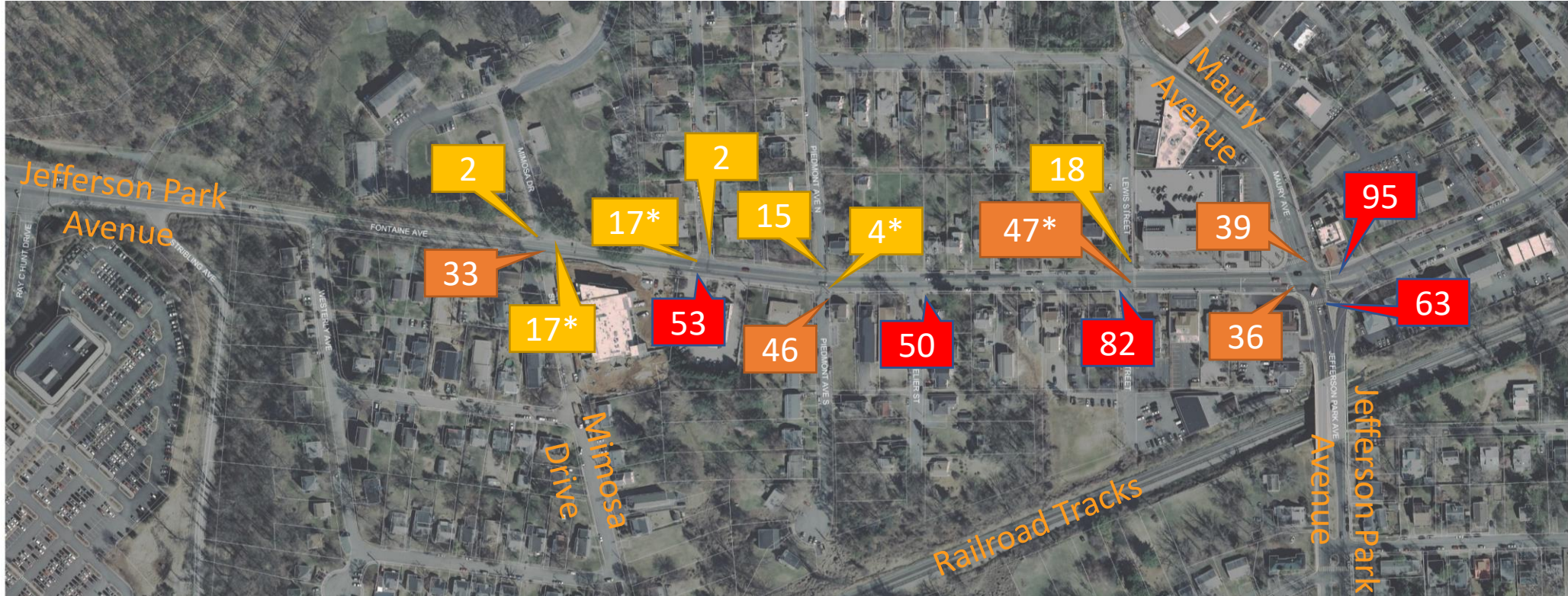
Multi-Modal Transportation



-  Sidewalk
-  Bike Lane
-  Pedestrian Crossing of Fontaine Ave
-  Pedestrian Crossing Adjacent to Fontaine Ave
-  Fire Station
-  Bus Stop
-  Medical Transportation

Multi-Modal Transportation

- 13,000 vehicles per day
- Pedestrian Crossings in AM + PM Peak Period (4 Hours total)



*Unsignalized Crossing

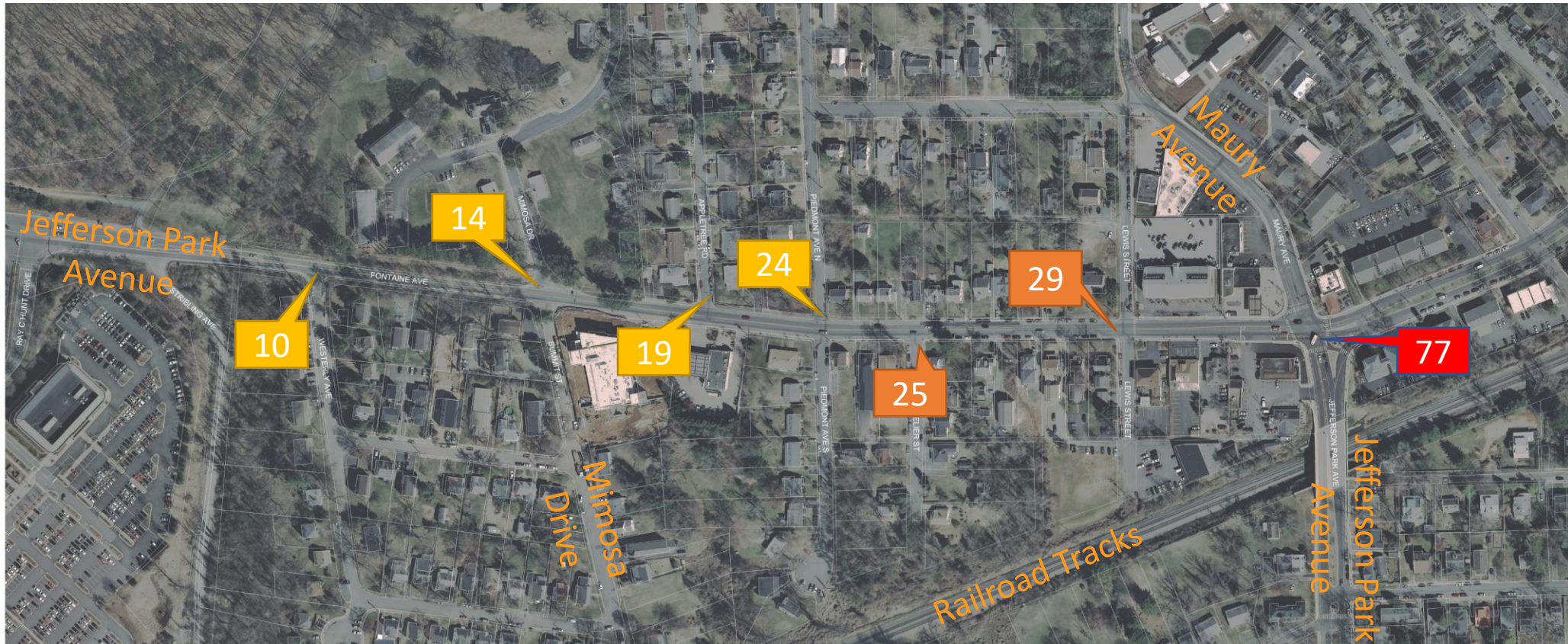
Yellow: 0-25 Crossings

Orange: 25-49 Crossings

Red: 50+ Crossings

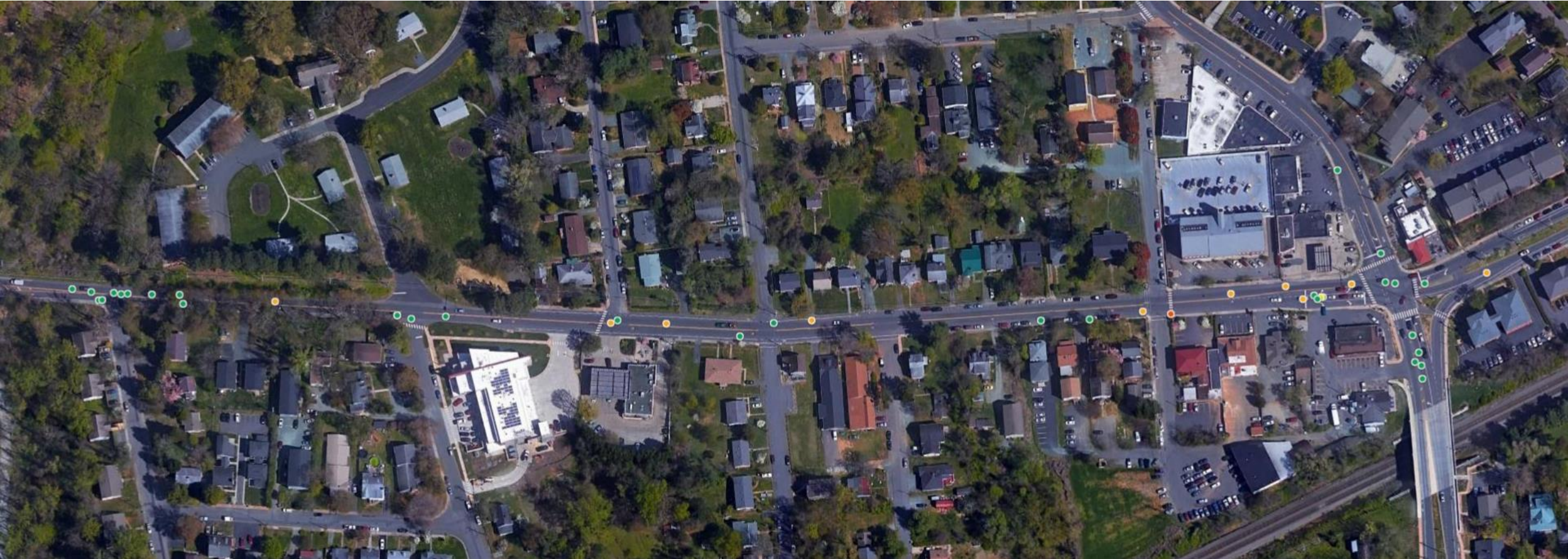
Multi-Modal Transportation

- Bicycles in the Roadway – AM + PM Peak Period (4 Hours Total)



Yellow: 0-25 Cyclists
Orange: 25-49 Cyclists
Red: 50+ Cyclists

Crash Data – By Severity



- PDO.Property Damage Only (32)
- B.Visible Injury (10)
- A.Ambulatory Injury (1)
- C.Non-visible Injruy (1)

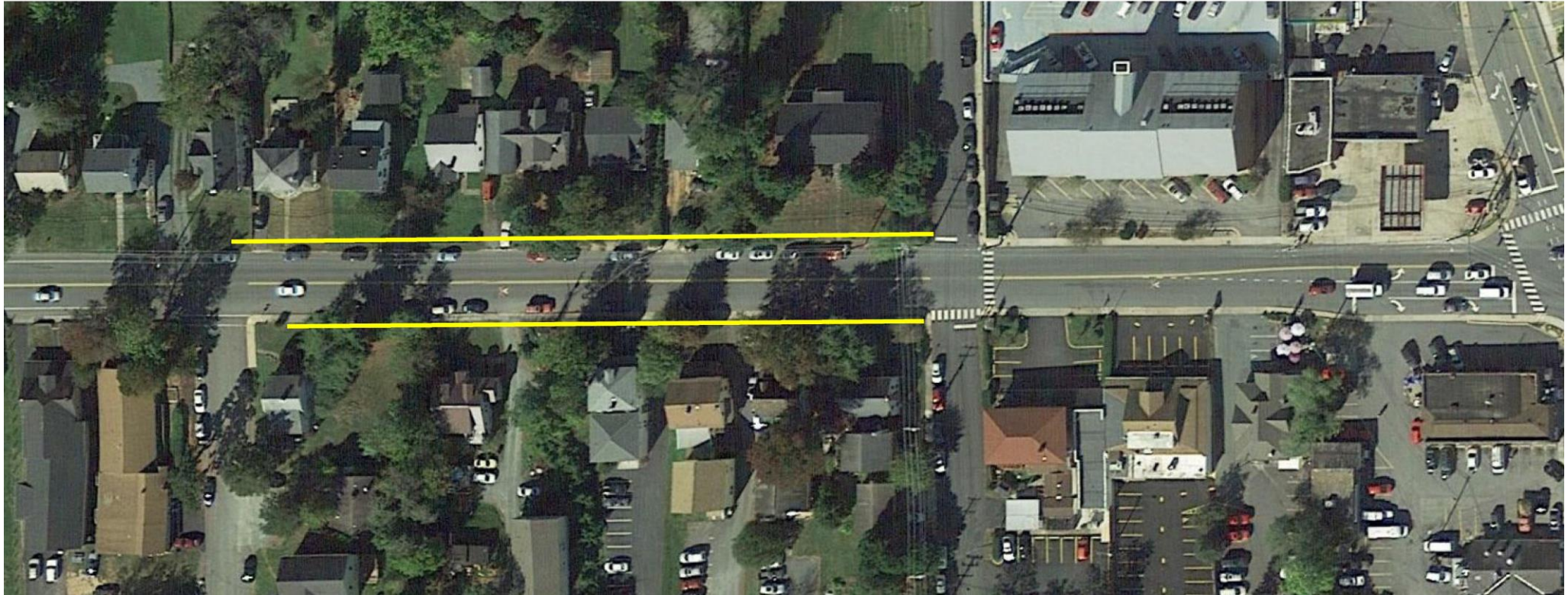
Crash Data – Pedestrian and Bicycle Incidents



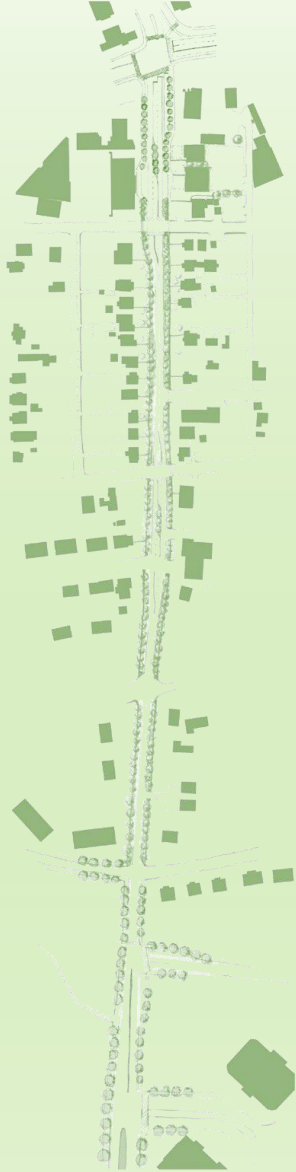
● Pedestrian-Involved Crashes

● Bicycle-Involved Crashes

Parking Observations



- Parking 100% Utilized Between 7AM and 5PM
- Parking 60% Utilized Between 5PM and 7AM
- Infrequent Daytime Turnover
- Currently 25 Parking Spaces



Public Workshop

Public Workshop Materials



City of Charlottesville | Public Information Meeting
Thursday, January 31, 2019, 5:30 – 7:30 PM



FONTAINE AVENUE STREETSCAPE IMPROVEMENTS PROJECT

www.fontainestreetscape.com
VDOT Project Number: U000-104-296, P101, R201, C501
UPC 109484

Welcome to the City of Charlottesville Public Information Meeting

PUBLIC MEETING GOALS

This meeting is an opportunity for citizens and organizations to learn more about this exciting project. The City of Charlottesville strives to ensure that all members of the community have the opportunity to gain insight and provide comments on projects. It is important that the City verifies, through meetings like this, that the conceptual designs for this project reflect the priorities and desires of the community. City representatives are present to discuss the project and answer any questions you may have.

A comment sheet has been included with this handout. Your input is important to us and is encouraged. All written comments received on this project will be reviewed by City of Charlottesville personnel. Your input will be considered in the conceptual design that will be presented to the City of Charlottesville Planning Commission this Summer.

PROJECT OVERVIEW

Fontaine Avenue is a mixed use residential/commercial gateway to Charlottesville and the University of Virginia used by people who walk, bike, drive, and use the available transit systems. The existing right-of-way is 50 feet wide with two travel lanes, limited on street parking, a 4' sidewalk on the southern side of the street and non-continuous bike lanes.

The Fontaine Avenue Streetscape Improvements project seeks to provide:

- Improved pedestrian and bicycle facilities
- Increased safety for all users
- Improved transit access and facilities
- Improved traffic flow

The improvements are anticipated to extend from the City Limits near Fontaine Research Park to and including the intersection of Fontaine Avenue and Jefferson Park Avenue, nearly one half of a mile in length.

This project is expected to provide the following regional and local benefits:

- Connect to Albemarle County's proposed bicycle and pedestrian facilities that will lead to Fontaine Research Park and beyond
- Improve access to UVA Hospital from I-64 and US Route 29
- Increase opportunities for people to efficiently access businesses, jobs, services and distributions hubs
- Provide opportunities to reduce vehicular travel



ANTICIPATED SCHEDULE

Fall 2018 – Spring 2019	CONCEPTUAL DEVELOPMENT • Data Collection • Traffic Analysis • Alternative Concepts
Spring 2019 – Fall 2019	PRELIMINARY DESIGN • Refine Concepts • Prepare 30% Plans • Agency Review
Fall 2019 – Winter 2020	DESIGN DEVELOPMENT • Prepare 60% Plans • Incorporate Feedback
Winter 2019 – Winter 2020	RIGHT OF WAY AND UTILITIES • Request Right of Way Authorization • Utility Relocations • Easements
Winter 2020 – Fall 2021	FINAL DESIGN • Prepare 100% Plans • Coordinate Bid Package • Final Agency Review • Request Authorization for Construction
Fall 2021	ADVERTISEMENT AND BIDDING • Advertise for Contractor • Complete Bidding Process • Prepare Contract • Award Contract
Winter 2021	CONSTRUCTION PHASE

ESTIMATED PROJECT COST

PE (Survey, Environmental, Design)	\$1.2M
RW (Right of Way and Easement Acquisition, Utility Relocation)	\$3.7M
CN (Construction, Oversight, Inspection, Contingencies)	\$6.8M
TOTAL PROPOSED PROJECT FUNDING	\$11.7M

GET INVOLVED

The comment form may be filled out tonight and turned in or returned by email or mail to the City of Charlottesville. Comments may be emailed to klingsk@charlottesville.org. Comments should be submitted on or before February 15, 2019. The displays at this meeting and the comment form may be viewed and printed from the project website www.fontainestreetscape.com. All comments and opinions are welcome.

For more information contact:






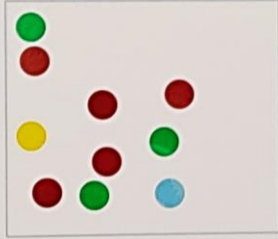

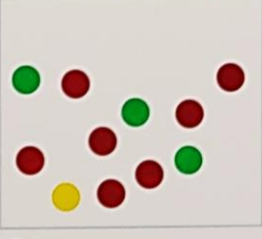

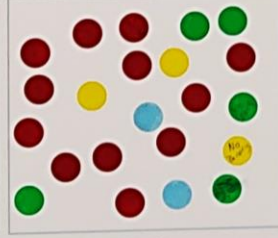


Kyle King, City of Charlottesville Transportation Project Manager
Telephone: 434.970.3394
Email: klingsk@charlottesville.org




Public Workshop Materials

Fontaine Streetscape

MULTI-MODAL TRANSPORTATION: TYPICAL SECTION ELEMENTS


RK&K
 JANUARY 31, 2019

Online responses favored Landscape Buffer (5) and Bicycle Lane, On-Street Parking and Sidewalk (No Buffer) (4)

Public Workshop Materials

Fontaine Streetscape

MULTI-MODAL TRANSPORTATION: PEDESTRIAN CROSSING

Standard Crosswalk Without Island

Static Signs and Markings

Crosswalk with Curb Extension

Rectangular Rapid Flashing Beacon

Crosswalk with Median Refuge

High-Intensity Actuated Crosswalk / Pedestrian Hybrid Beacon

RK&K

 JANUARY 31, 2019

Online responses favored Crosswalk with Curb Extension (5), Crosswalk with Median Refuge (4), and RRFB (3)

Public Workshop Materials

Fontaine Streetscape

MULTI-MODAL TRANSPORTATION: BICYCLE ACCOMMODATIONS

Option	Response Count
Shared Lanes	0
Protected Bicycle Lane in Each Direction	8
Non-Buffered Bicycle Lanes	10
Grade Separated Bicycle Lanes	8
Buffered Bicycle Lanes	12
Shared Use Path	4

Fontaine Streetscape

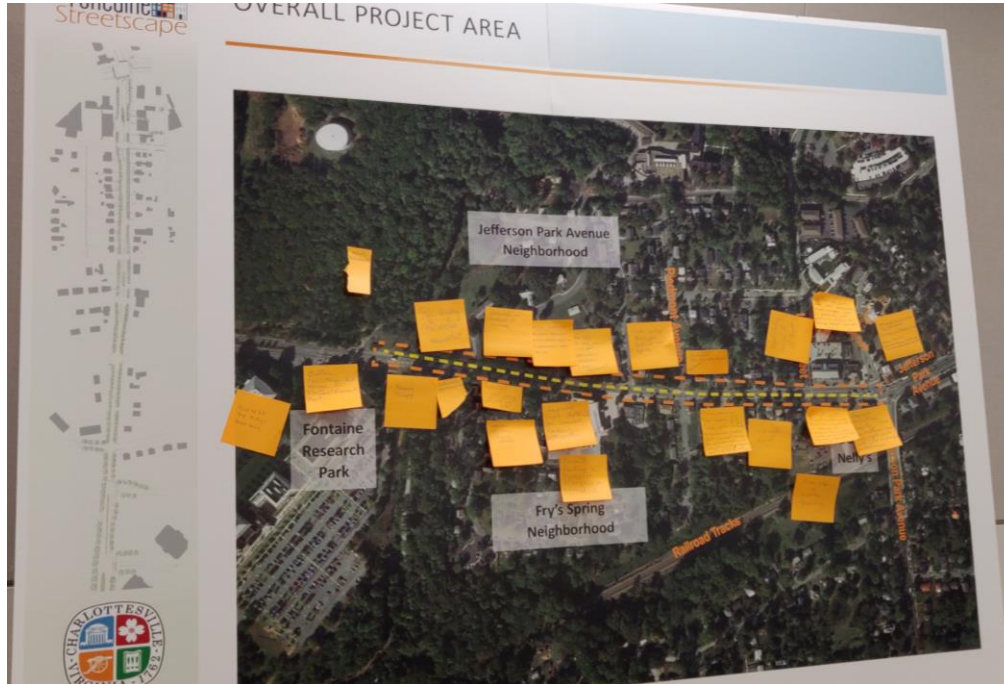
AN CHARLOTTESVILLE VIRGINIA 1922

RK&K

JANUARY 31, 2019

Online responses favored Shared Use Path (4), Protected Lanes (4), Grade Separated (3), and Buffered (3)

Public Workshop Materials

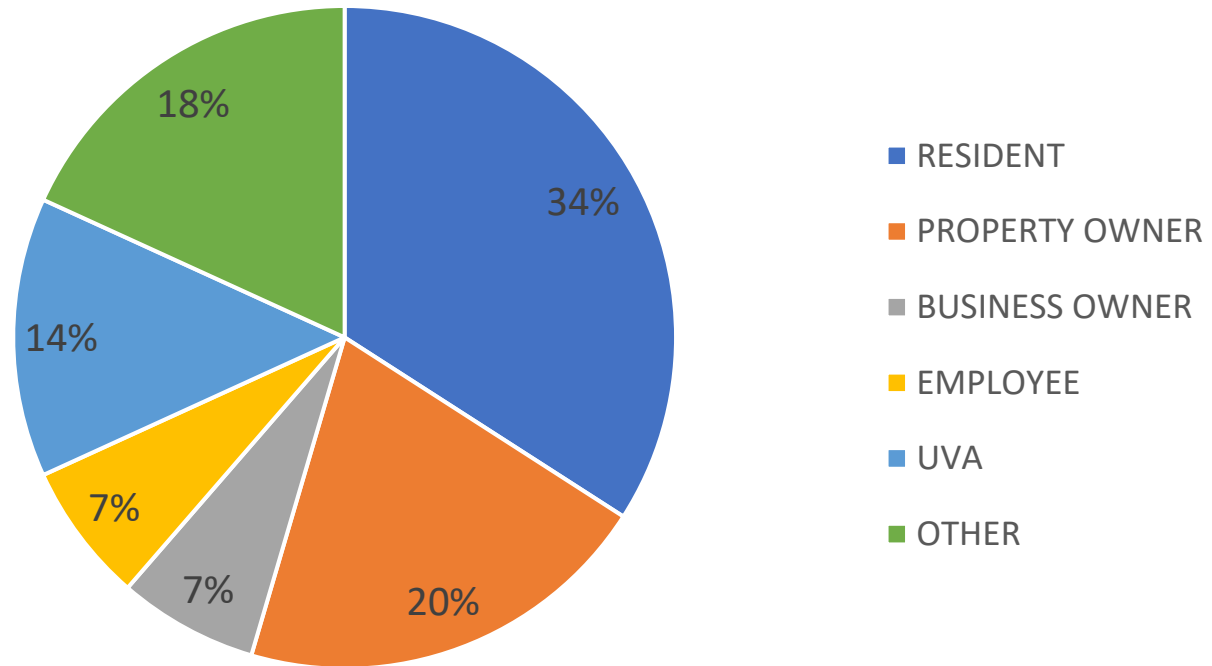


- Safe Pedestrian Crossings at Side Streets
- Add / Widen Sidewalks
- Provide More Green Space
- Preserve Trees
- Routes Safe for Bicycles

Comment Form Responses

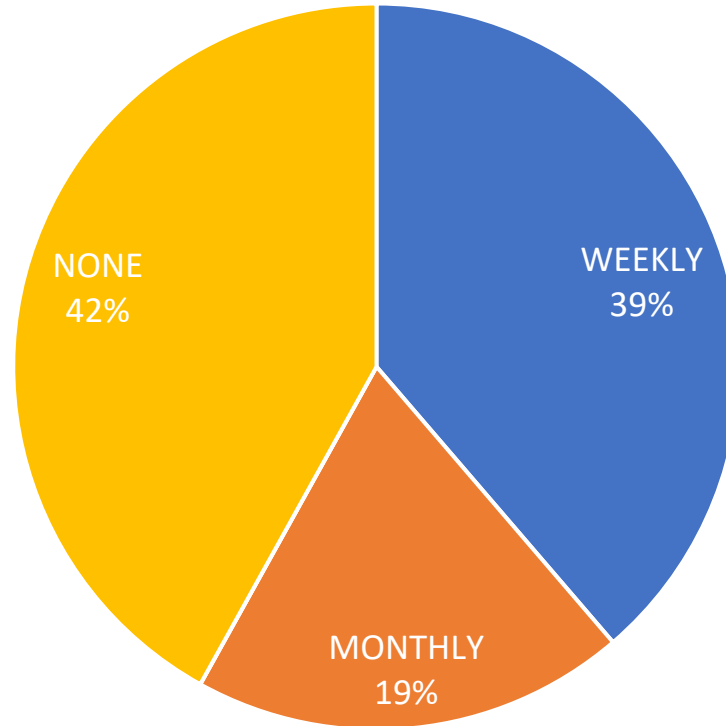


INTEREST IN THE STUDY AREA

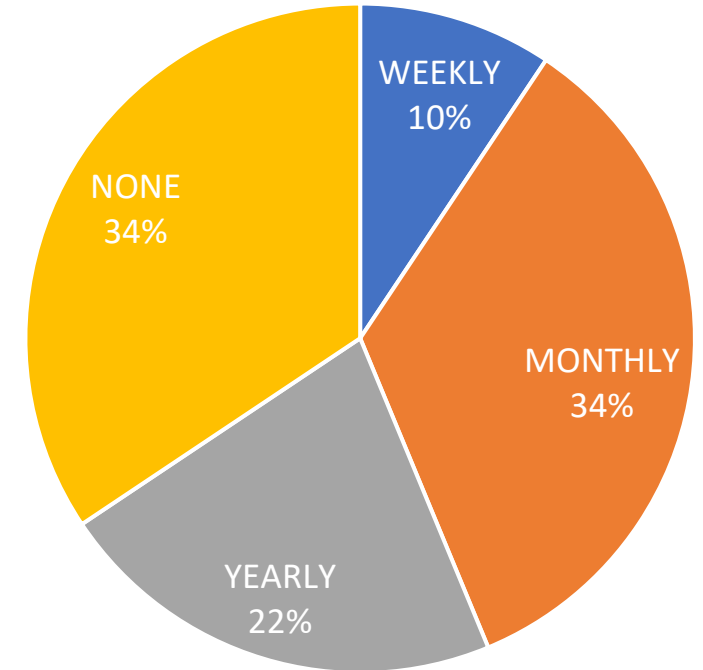


Comment Form Responses

TRAVEL / COMMUTE BY BIKE

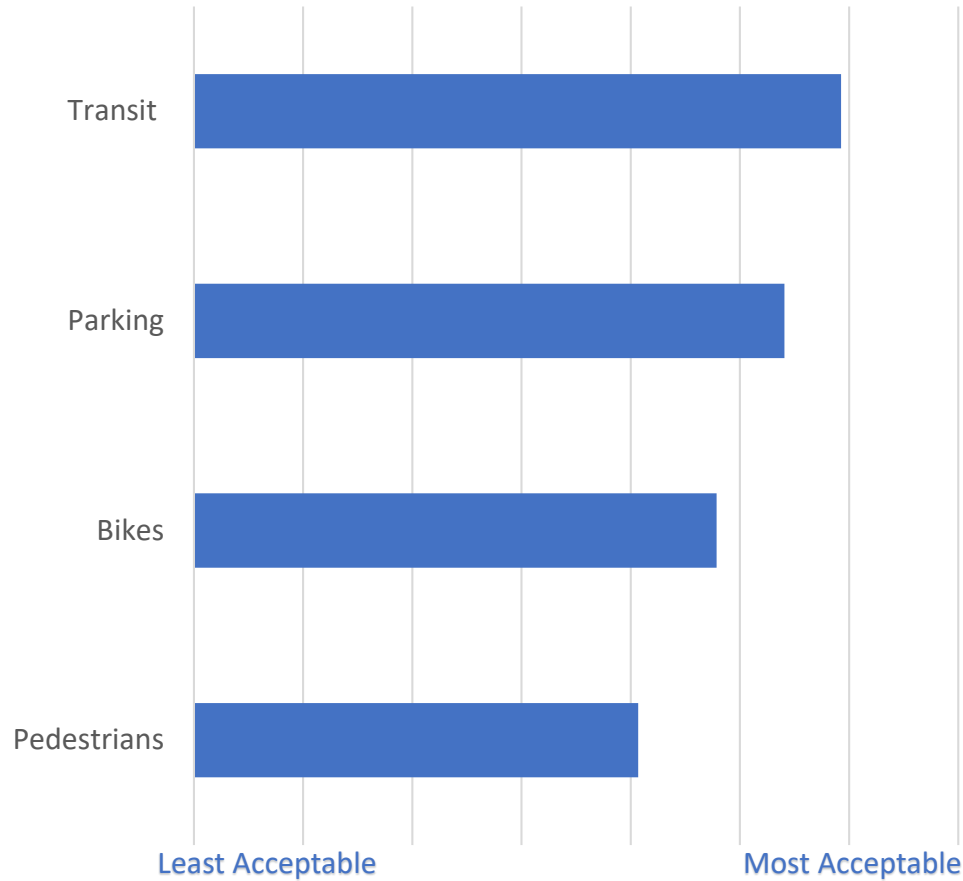


TRAVEL / COMMUTE USING LOCAL
TRANSIT



Comment Form Responses

Rating of Current Conditions

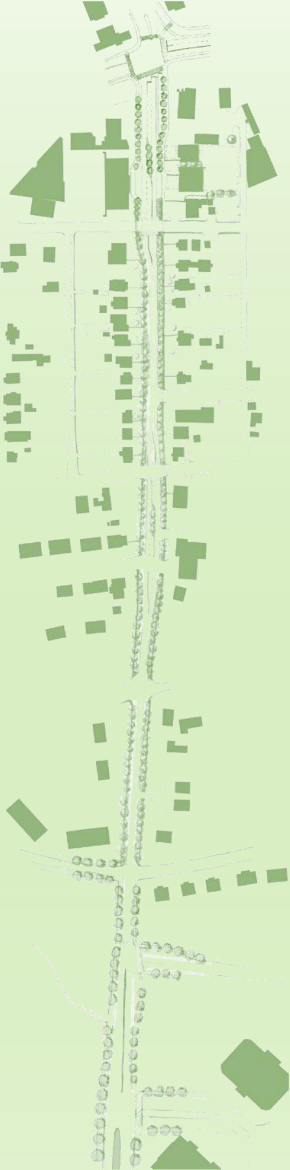
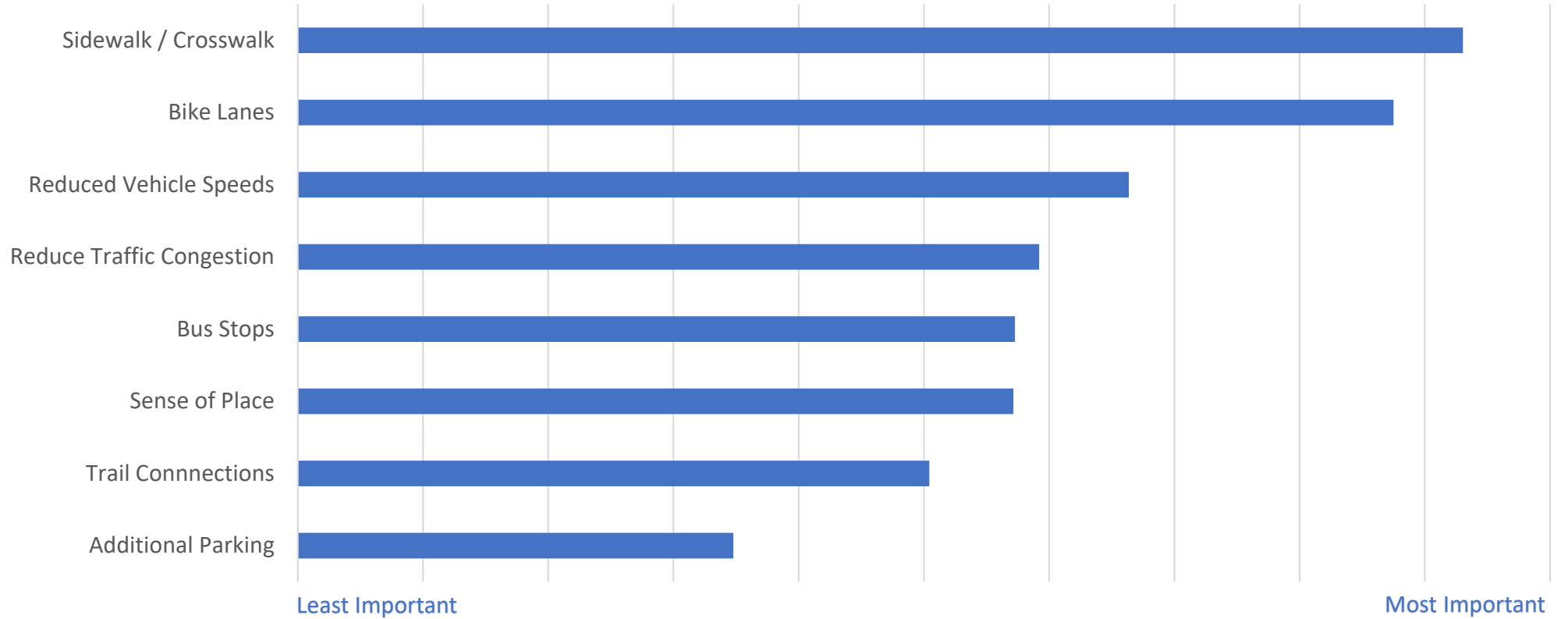


Common Feedback:

- Biking is dangerous
- On street parking is not a neighborhood benefit (Primarily used by UVA)
- Site distances onto the street

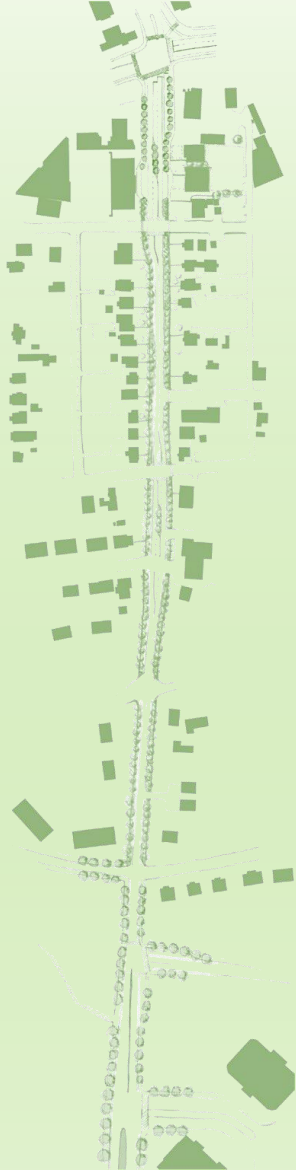
Comment Form Responses

Importance of Future Conditions



Public Workshop Feedback

- Common Feedback:
 - Want safe pedestrian connection at Piedmont/ Appletree/ Mimosa
 - Avoid reducing existing front lawns; Maintain existing Right-of-Way
 - Add/widen sidewalks with streetlighting
 - Follow Streets at Work guidelines
 - Include safe, protected bike lanes
 - Consider how to best utilize the paper alleys (parking or access)
 - Preserve trees and include green infrastructure
 - On-street parking is not a neighborhood benefit
- Things They Would Like to See at Future Meetings:
 - Coordinate with the County to include Fontaine Research Park and the Route 29 ramps
 - Is UVA contributing to the solution?
 - Will Environmental Assessments be completed?
 - Production of sections, noting that multiple sections for the street might be required



Steering Committee

Key Elements from the Steering Committee

Goals:

- Safety for All Users (Vehicles, Pedestrians, Bicyclists, Transit)
- Alleviate Congestion
- Create a Sense of Place

Concerns:

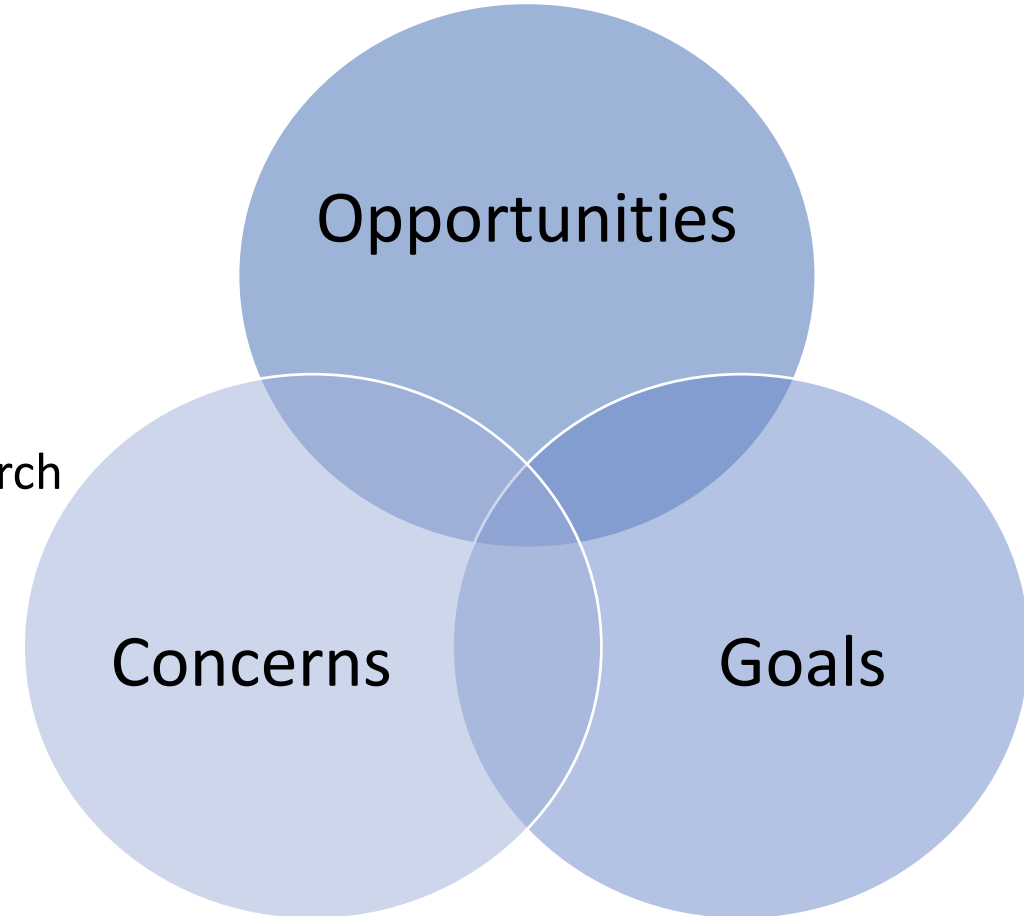
- Right of Way and Site Limitations
- Gap Between City Limit and Signal at Research Park

Opportunities:

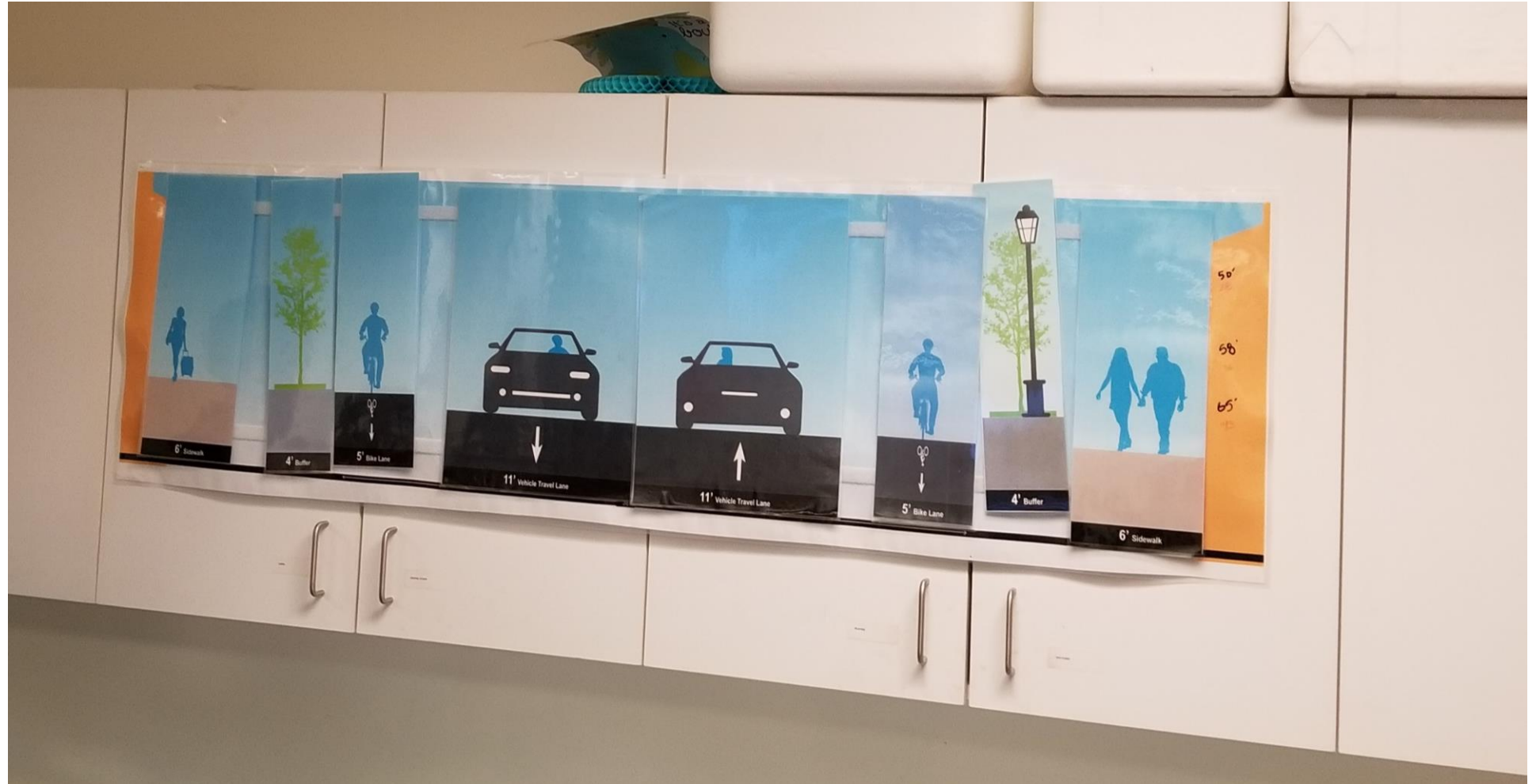
- Improve Access Management
- Stormwater Management
- Beautification / Gateway to Charlottesville

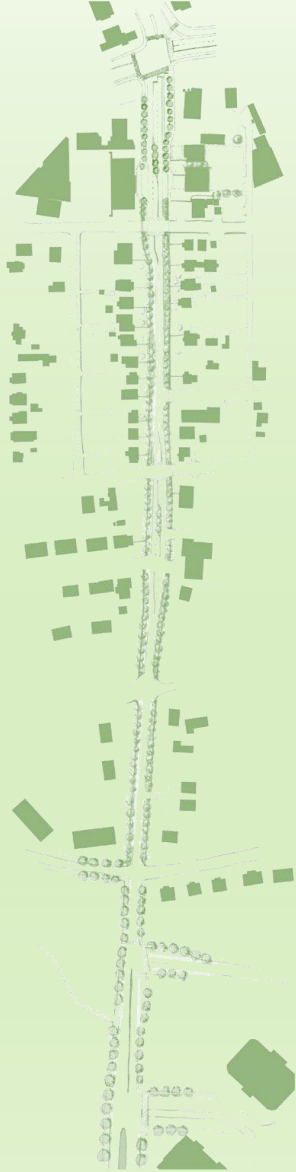
General:

- Need to Account for Trash / Deliveries / Excess Event Parking
- On-street Parking Not a Priority



Streetscape Layout



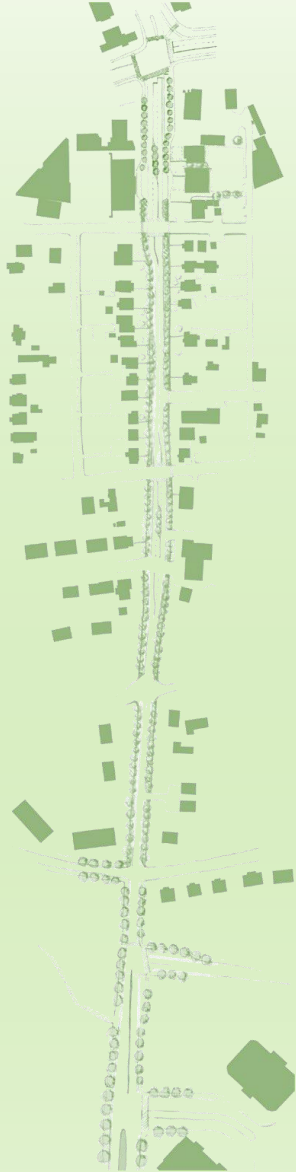


Next Steps

Next Steps

- Steering Committee Meeting #3 – March 25, 2019
- Public Workshop #2 – Late April / Early May 2019
- Concept Development

www.fontainestreetscape.com



Thank you!



*In Conjunction
With*

TOOLE
DESIGN