

# Fontaine Avenue Streetscape Improvements

Steering Committee Meeting #2

February 28, 2019



*In Conjunction  
With*



# Agenda

- Welcome
- Recap of Previous Steering Committee Meeting
- Review of Public Workshop
- Streetscape Activity
- Next Steps
- Adjourn





# Recap of Previous Steering Committee Meeting



# Project Area

- Project Area as defined by the project SMARTSCALE application





# Fontaine Avenue Streetscape Improvements

- Regional and local benefits:
  - **Improved access** to:
    - ▶ US-29
    - ▶ UVA
    - ▶ University Health System
  - **Connect** to proposed bicycle and pedestrian facilities to Fontaine Research Park and beyond
  - **Increase opportunities for walking, bicycling, and the use of other transit**



# Project Budget

- PE (Survey, Environmental, Design)= \$1,200,000
- RW (Right of Way and Easement  
Acquisition, Utility Relocation = \$3,700,000
- CN (Construction, Oversight,  
Inspection, Contingencies) = \$6,800,000
- TOTAL PROPOSED PROJECT FUNDING = \$11,700,000
- Project Is Fully Funded Through Smartscale (HB2)



# Initial Project Schedule





# Multi-Modal Transportation

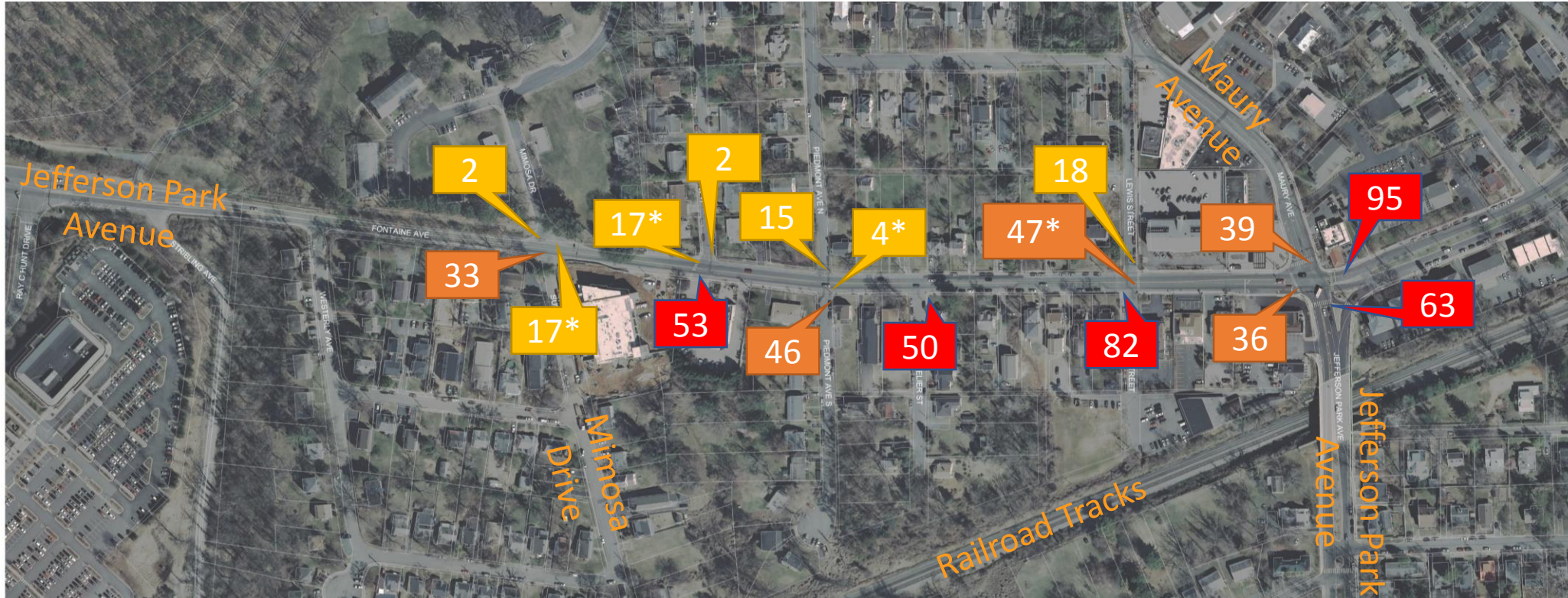


- Sidewalk
- Bike Paths
- Pedestrian Crossing of Fontaine Ave
- Pedestrian Crossing Adjacent to Fontaine Ave
- Fire Station
- Bus Stop
- Medical Transportation



# Multi-Modal Transportation

- 13,000 vehicles per day
- Pedestrian Crossings in AM + PM Peak Period (4 Hours total)



\*Unsignalized Crossing

Yellow: 0-25 Crossings

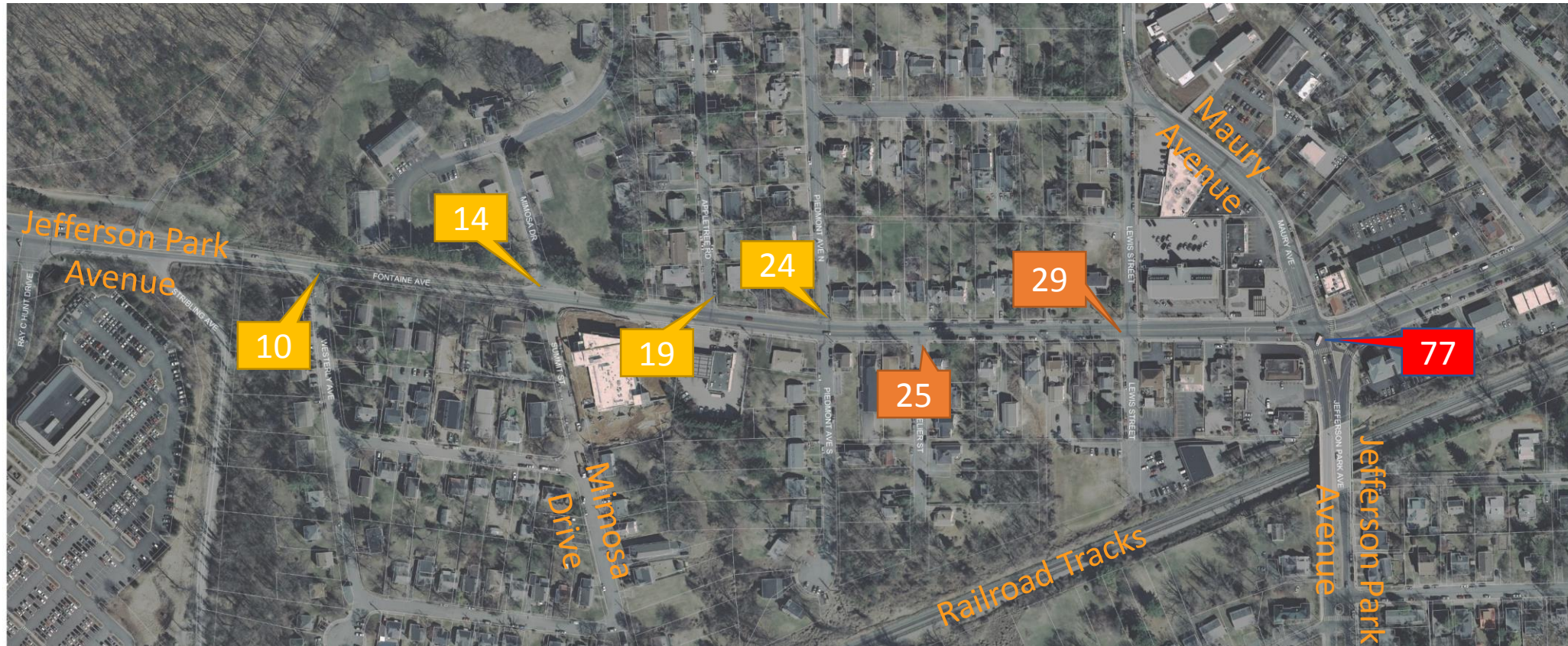
Orange: 25-49 Crossings

Red: 50+ Crossings



# Multi-Modal Transportation

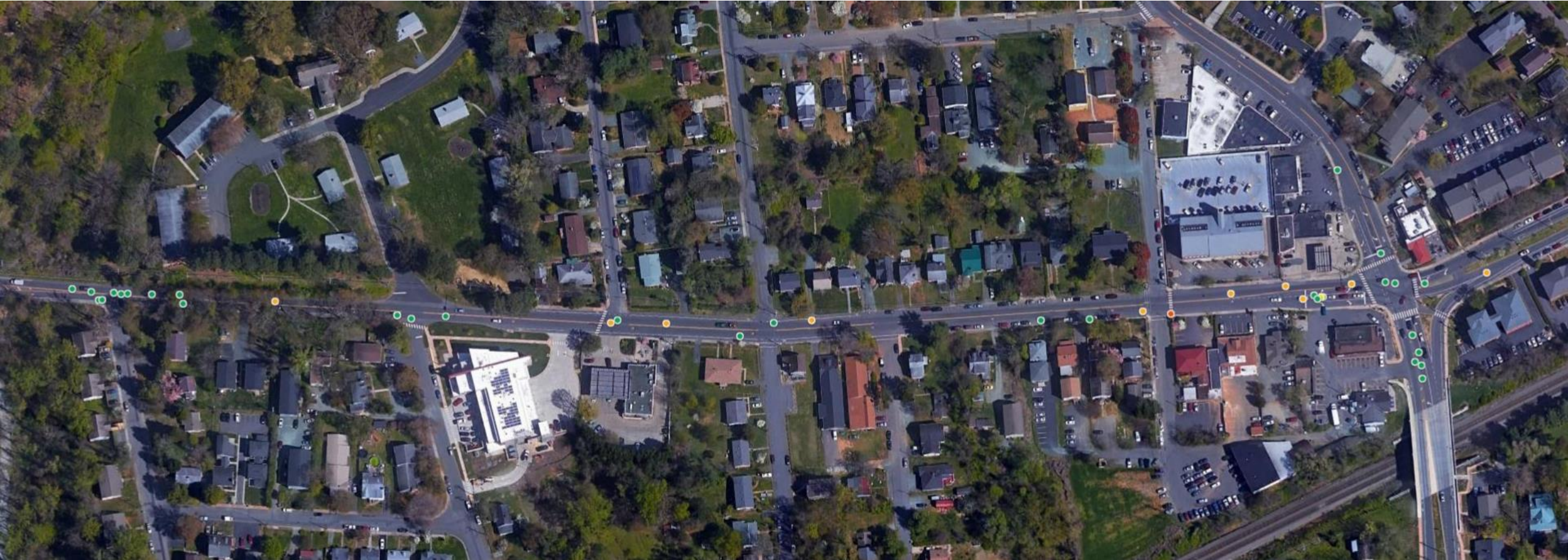
- Bicycles in the Roadway – AM + PM Peak Period (4 Hours Total)



Yellow: 0-25 Cyclists  
Orange: 25-49 Cyclists  
Red: 50+ Cyclists



# Crash Data – By Severity



- PDO. Property Damage Only (32)
- B. Visible Injury (10)
- A. Ambulatory Injury (1)
- C. Non-visible Injury (1)



# Crash Data – By Collision Type



- Rear End (19)
- Angle (13)
- Ped (3)
- Sideswipe - Same Direction (3)
- Head On (2)
- Fixed Object - Off Road (2)
- Deer (1)
- Sideswipe - Opposite Dire... (1)



# Crash Data – Pedestrian and Bicycle Incidents



● Pedestrian-Involved Crashes

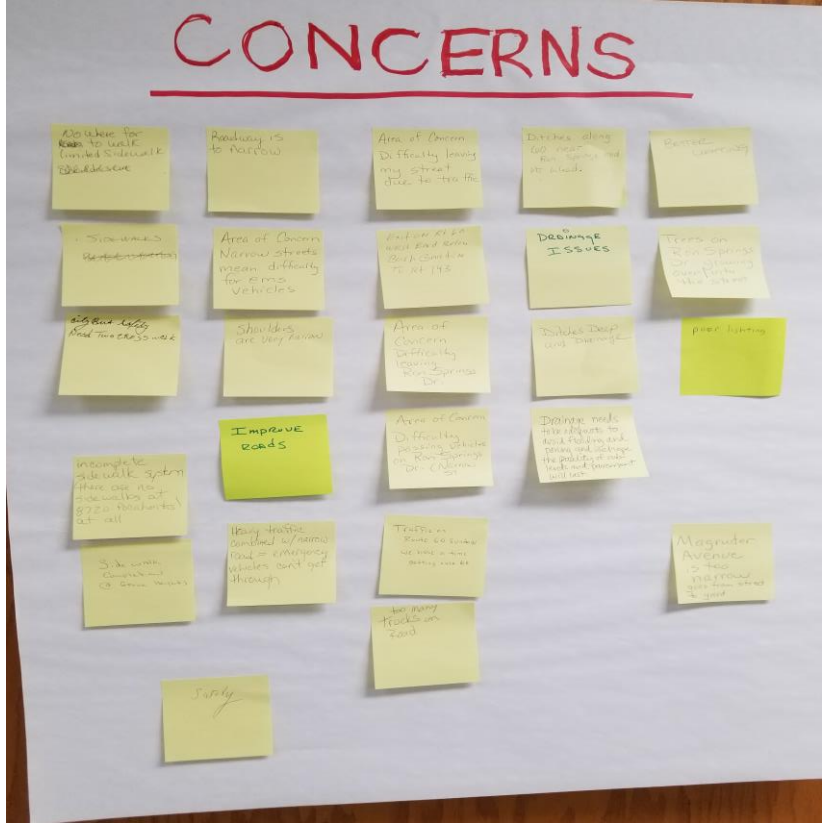
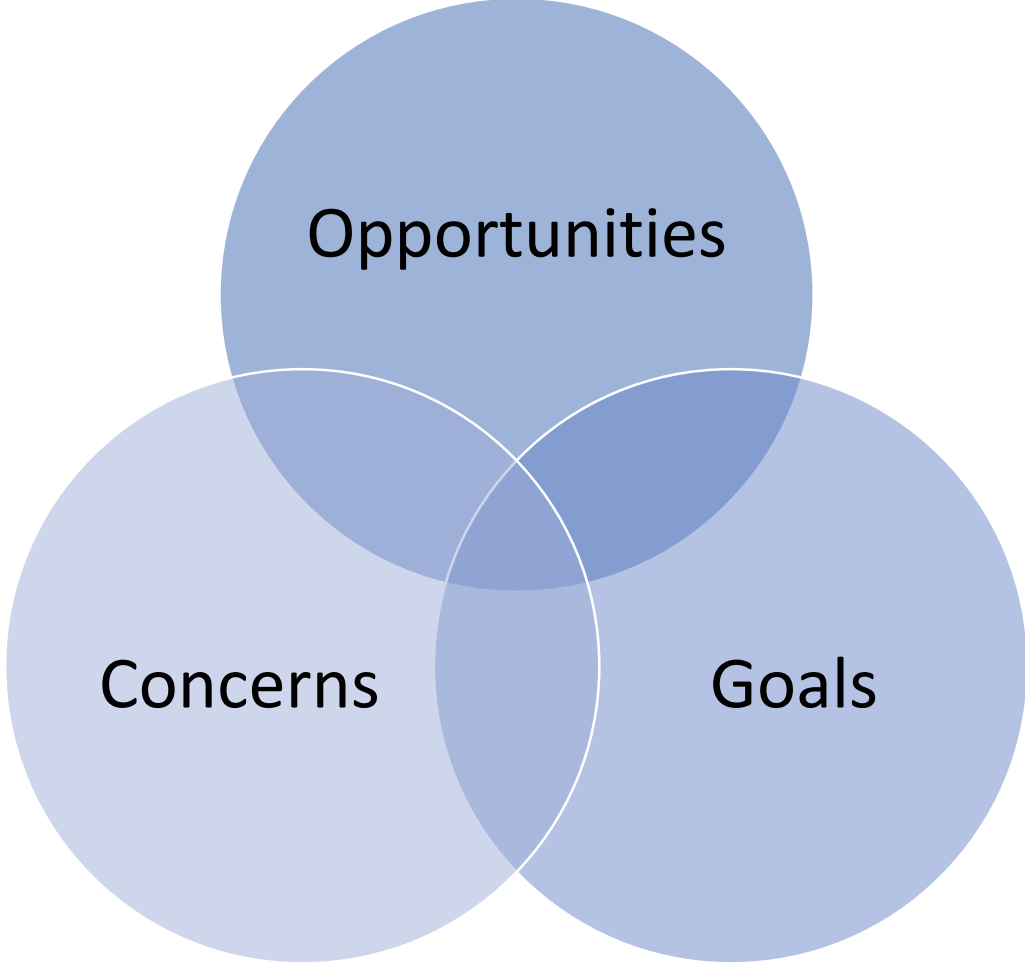
● Bicycle-Involved Crashes

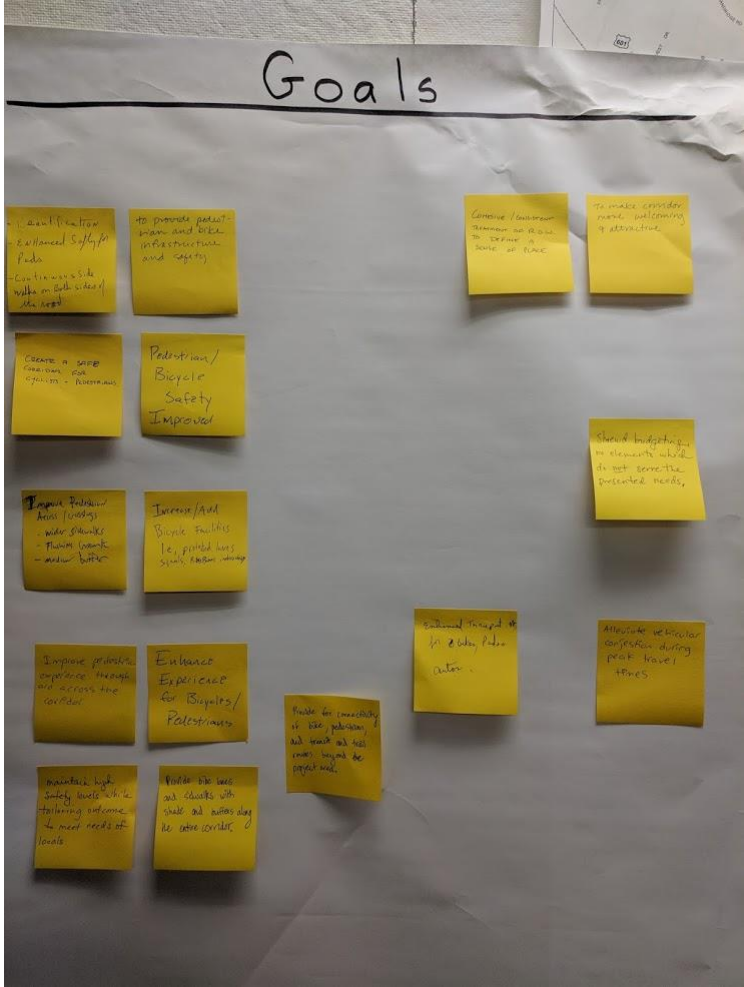
# Project Goals

*Based on the Charlottesville's Bike/Ped Plan, Streets That Work Plan, and the VDOT Smart Scale Application*

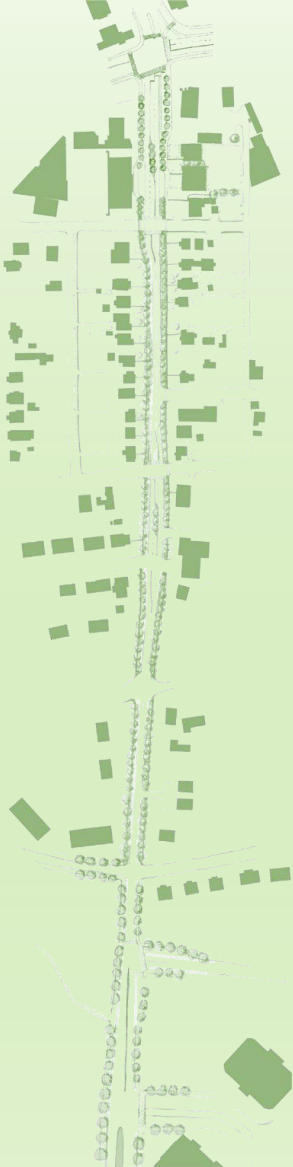
- Make a Complete Street
  - Improve Pedestrian, Bicycle and Transit accommodations
  - Balance the needs of all travel modes
- Increase Safety and Comfort for Pedestrians and Bicyclists
  - Provide a buffer between roadway and bike/ped facilities
  - Where feasible, provide physical separation for bike/ped facilities
- Beautify the Corridor as a Gateway
  - Provide landscaping and hardscape materials that provide shade, comfort, safety, and increases the attractiveness of the gateway



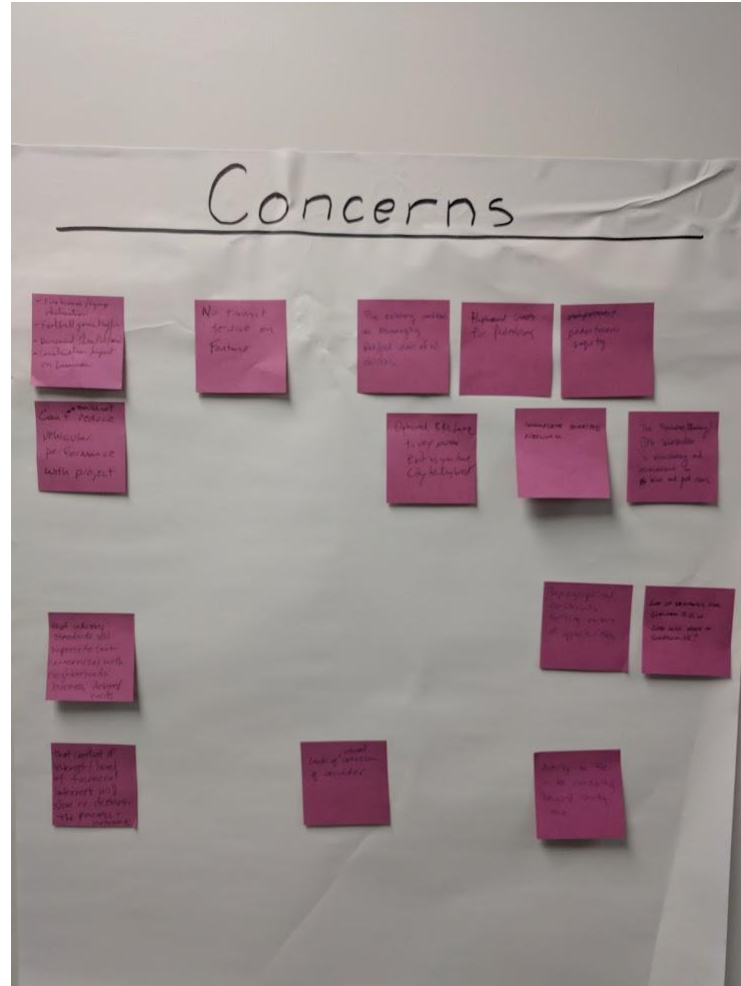




- Safety for All Users
- Enhanced Experience (More Attractive/Welcoming)
- Establish a Sense of Place
- Alleviate Congestion and Promote Traffic Flow

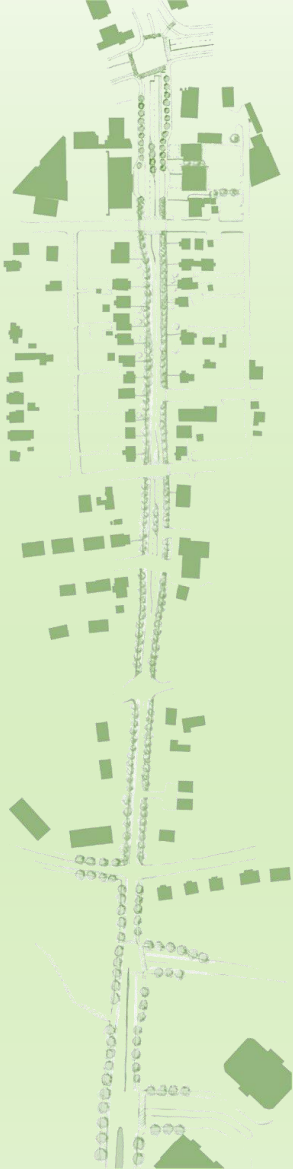


# Dialogue with the Steering Committee



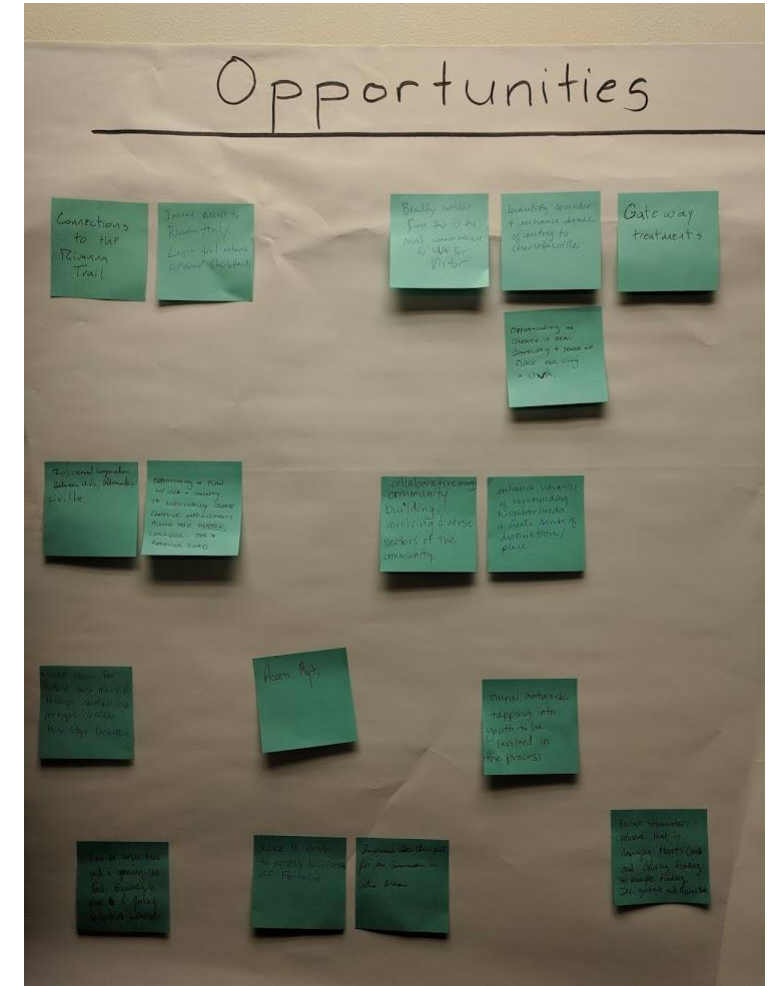
- Pedestrian / Bicycle Safety
- Lack of Public Transit Available
- Not Impeding Car Users
- Site Limitations (Right-of-way, Additional Constraints)
- Following The Community Context





# Dialogue with the Steering Committee

- Providing Access Management
- Beautification/Gateway to the City
- Providing A Connection to Amenities Such as the Rivanna Trail
- Better Access to Businesses
- Tie In to the UVA Community
- Stormwater Management
- Extend CAT Service to Fontaine Research Park as More Outpatient Facilities Are Relocated to the Research Park.



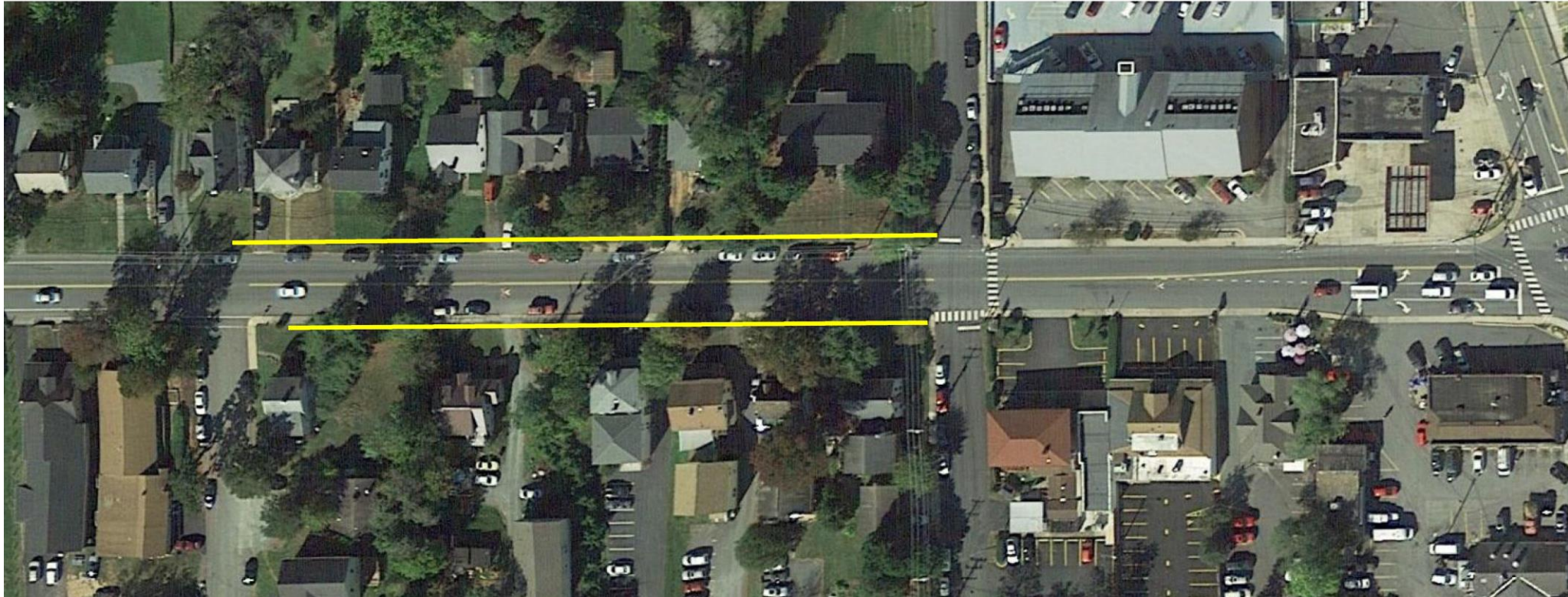
# Dialogue with the Steering Committee

## Discussion Points:

- Vehicles Think They are the Priority
- Consider Connecting UTS to Fontaine Research Park
- Need to Account for Trash / Deliveries / Excess Event Parking
- Student Community Should be More Involved
- There is a Gap Between the Future Albemarle County SmartScale Project and This Project
- Need to Analyze Community Parking Needs



# Parking Observations



- Parking 100% Utilized Between 7AM and 5PM
- Parking 60% Utilized Between 5PM and 7AM
- Infrequent Daytime Turnover
- Currently 25 Parking Spaces





# Review of Public Workshop

# Public Workshop Materials



City of Charlottesville | Public Information Meeting  
Thursday, January 31, 2019, 5:30 – 7:30 PM



## FONTAINE AVENUE STREETSCAPE IMPROVEMENTS PROJECT

[www.fontainestreetscape.com](http://www.fontainestreetscape.com)

VDOT Project Number: U000-104-296, P101, R201, C501  
UPC 109484

### Welcome to the City of Charlottesville Public Information Meeting

#### PUBLIC MEETING GOALS

This meeting is an opportunity for citizens and organizations to learn more about this exciting project. The City of Charlottesville strives to ensure that all members of the community have the opportunity to gain insight and provide comments on projects. It is important that the City verifies, through meetings like this, that the conceptual designs for this project reflect the priorities and desires of the community. City representatives are present to discuss the project and answer any questions you may have.

A comment sheet has been included with this handout. Your input is important to us and is encouraged. All written comments received on this project will be reviewed by City of Charlottesville personnel. Your input will be considered in the conceptual design that will be presented to the City of Charlottesville Planning Commission this Summer.

#### PROJECT OVERVIEW

Fontaine Avenue is a mixed use residential/commercial gateway to Charlottesville and the University of Virginia used by people who walk, bike, drive, and use the available transit systems. The existing right-of-way is 50 feet wide with two travel lanes, limited on street parking, a 4' sidewalk on the southern side of the street and non-continuous bike lanes.

The Fontaine Avenue Streetscape Improvements project seeks to provide:

- Improved pedestrian and bicycle facilities
- Increased safety for all users
- Improved transit access and facilities
- Improved traffic flow

The improvements are anticipated to extend from the City Limits near Fontaine Research Park to and including the intersection of Fontaine Avenue and Jefferson Park Avenue, nearly one half of a mile in length.

This project is expected to provide the following regional and local benefits:

- Connect to Albemarle County's proposed bicycle and pedestrian facilities that will lead to Fontaine Research Park and beyond
- Improve access to UVA Hospital from I-64 and US Route 29
- Increase opportunities for people to efficiently access businesses, jobs, services and distributions hubs
- Provide opportunities to reduce vehicular travel



#### ANTICIPATED SCHEDULE

Time Period	Project Phase	Key Activities
Fall 2018 – Spring 2019	CONCEPTUAL DEVELOPMENT	• Data Collection • Traffic Analysis • Alternative Concepts
Spring 2019 – Fall 2019	PRELIMINARY DESIGN	• Refine Concepts • Prepare 30% Plans • Agency Review
Fall 2019 – Winter 2020	DESIGN DEVELOPMENT	• Prepare 60% Plans • Incorporate Feedback
Winter 2019 – Winter 2020	RIGHT OF WAY AND UTILITIES	• Request Right of Way Authorization • Utility Relocations • Easements
Winter 2020 – Fall 2021	FINAL DESIGN	• Prepare 100% Plans • Coordinate Bid Package • Final Agency Review • Request Authorization for Construction
Fall 2021	ADVERTISEMENT AND BIDDING	• Advertise for Contractor • Complete Bidding Process • Prepare Contract • Award Contract
Winter 2021	CONSTRUCTION PHASE	

#### ESTIMATED PROJECT COST

PE (Survey, Environmental, Design)	\$1.2M
RW (Right of Way and Easement Acquisition, Utility Relocation)	\$3.7M
CN (Construction, Oversight, Inspection, Contingencies)	\$6.8M
<b>TOTAL PROPOSED PROJECT FUNDING</b>	<b>\$11.7M</b>

#### GET INVOLVED

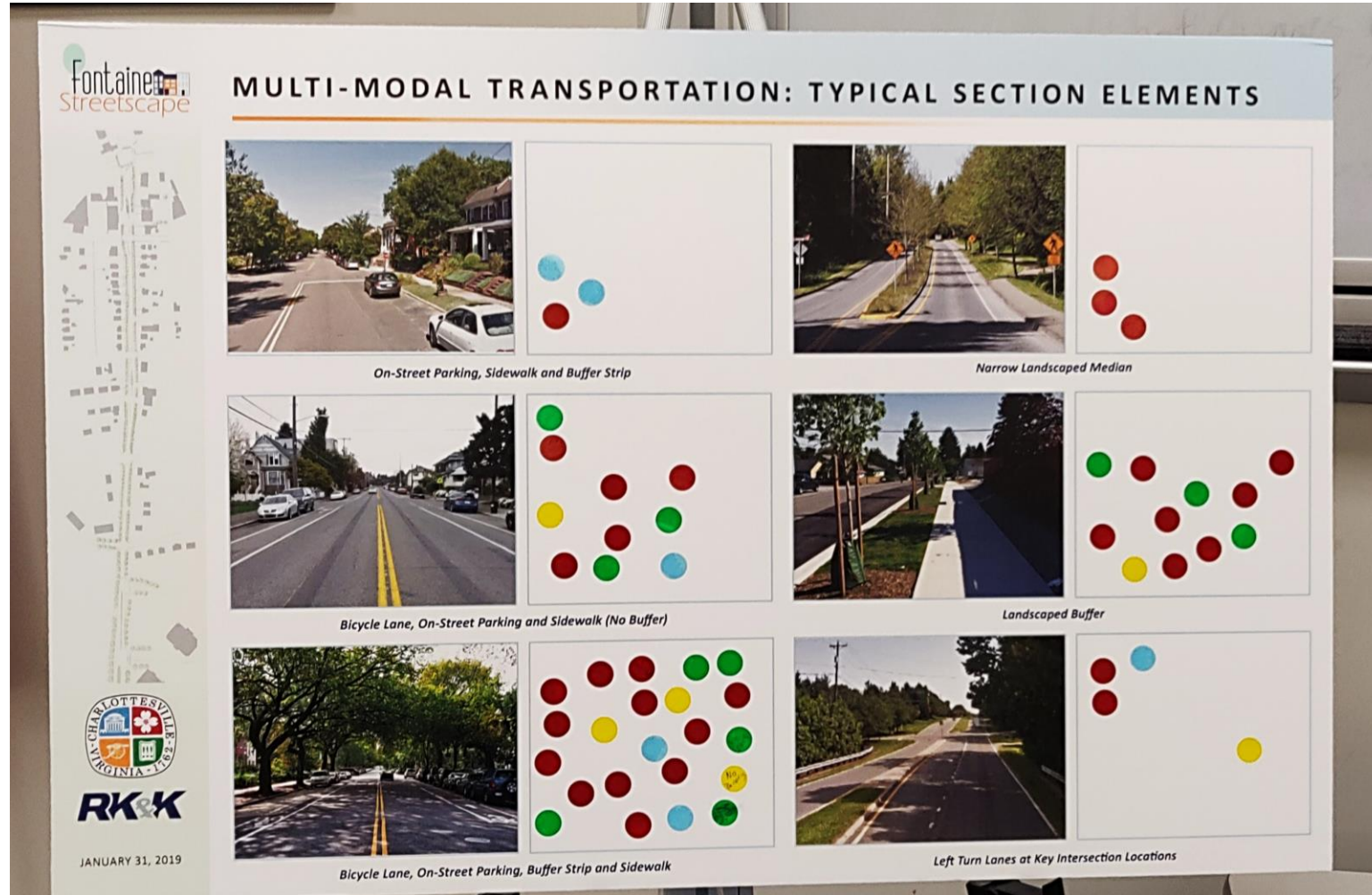
The comment form may be filled out tonight and turned in or returned by email or mail to the City of Charlottesville. Comments may be emailed to [klngk@charlottesville.org](mailto:klngk@charlottesville.org). Comments should be submitted on or before February 15, 2019. The displays at this meeting and the comment form may be viewed and printed from the project website [www.fontainestreetscape.com](http://www.fontainestreetscape.com). All comments and opinions are welcome.

#### For more information contact:

Kyle King, City of Charlottesville Transportation Project Manager  
Telephone: 434.970.3394  
Email: [klngk@charlottesville.org](mailto:klngk@charlottesville.org)



# Public Workshop Materials



Online responses favored Landscape Buffer (5) and Bicycle Lane, On-Street Parking and Sidewalk (No Buffer) (4)



# Public Workshop Materials



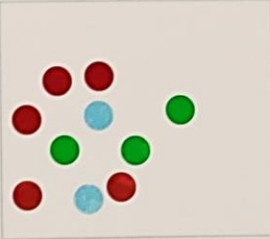

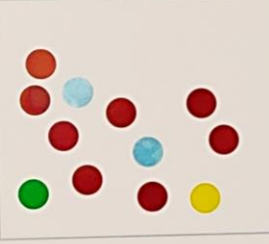

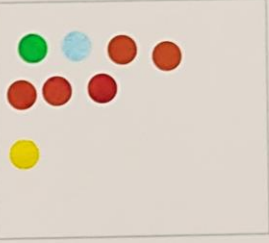

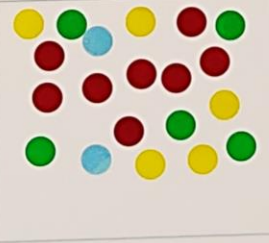

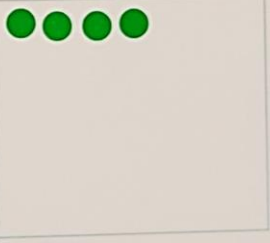



Online responses favored Crosswalk with Curb Extension (5), Crosswalk with Median Refuge (4), and RRFB (3)

# Public Workshop Materials

Fontaine Streetscape

## MULTI-MODAL TRANSPORTATION: BICYCLE ACCOMMODATIONS

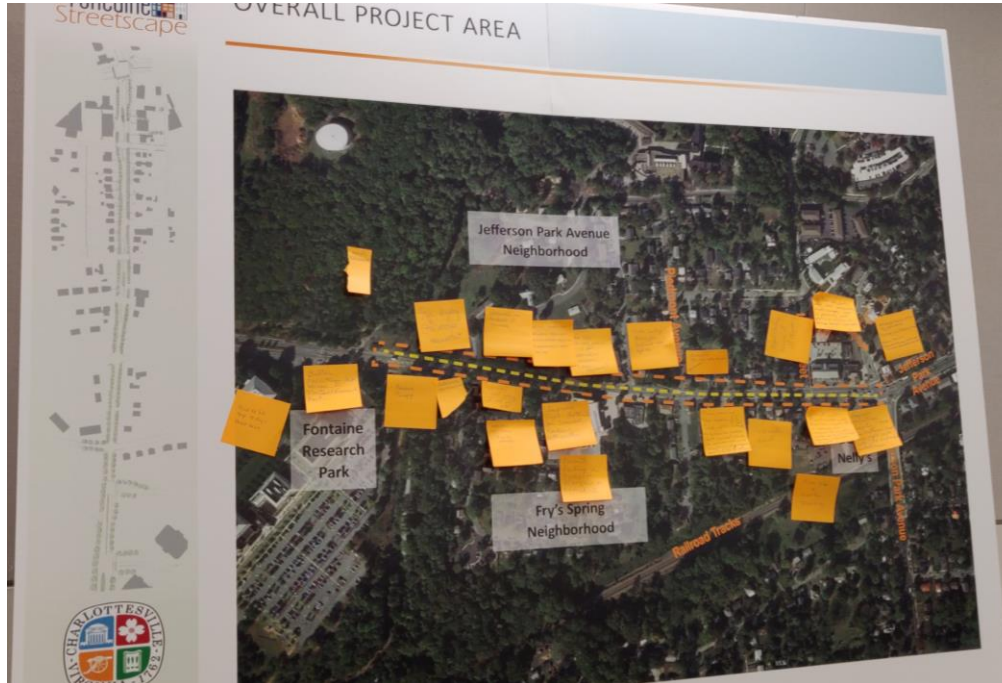
			
Shared Lanes		Protected Bicycle Lane in Each Direction	
			
Non-Buffered Bicycle Lanes		Grade Separated Bicycle Lanes	
			
Buffered Bicycle Lanes		Shared Use Path	

  
**RK&K**  
 JANUARY 31, 2019

Online responses favored Shared Use Path (4), Protected Lanes (4), Grade Separated (3), and Buffered (3)



# Public Workshop Materials



- Safe Pedestrian Crossings at Side Streets
- Add / Widen Sidewalks
- Provide More Green Space
- Preserve Trees
- Routes Safe for Bicycles

# Public Workshop Data

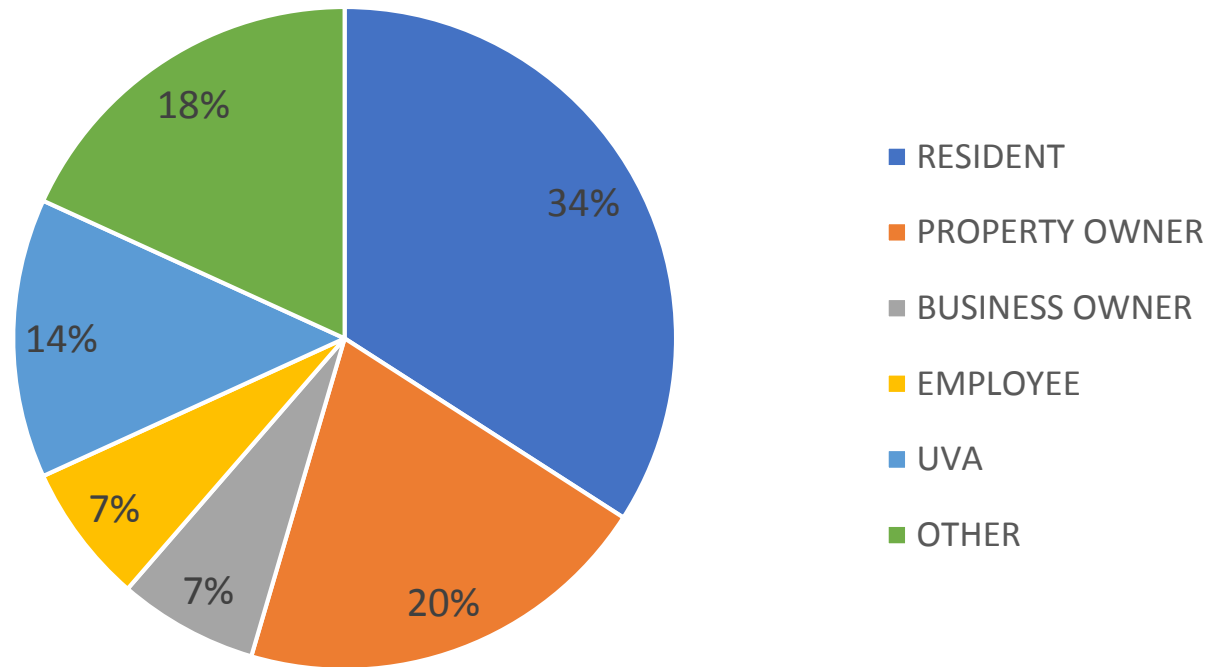
## ■ Common Feedback:

- Want safe pedestrian connection at Piedmont/ Appletree/ Mimosa
- Add/ widen sidewalks is desired
- Site distances onto Fontaine are currently poor
- More green space/ trees and/ or maintain existing tree canopy
- Safety for bicycles is needed
- On street parking is not a neighborhood benefit (Primarily used by UVA)
- Concern with property impacts



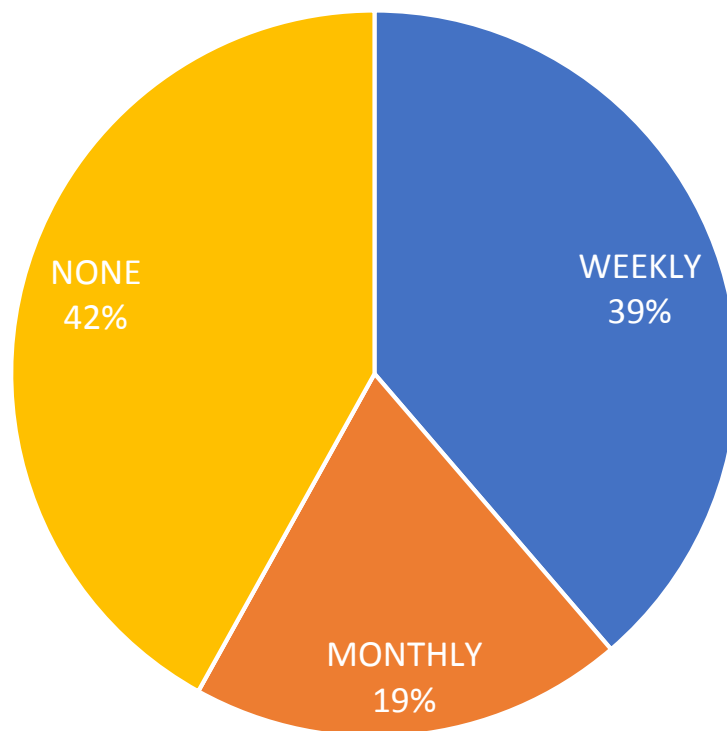
# Comment Form Responses

INTEREST IN THE STUDY AREA

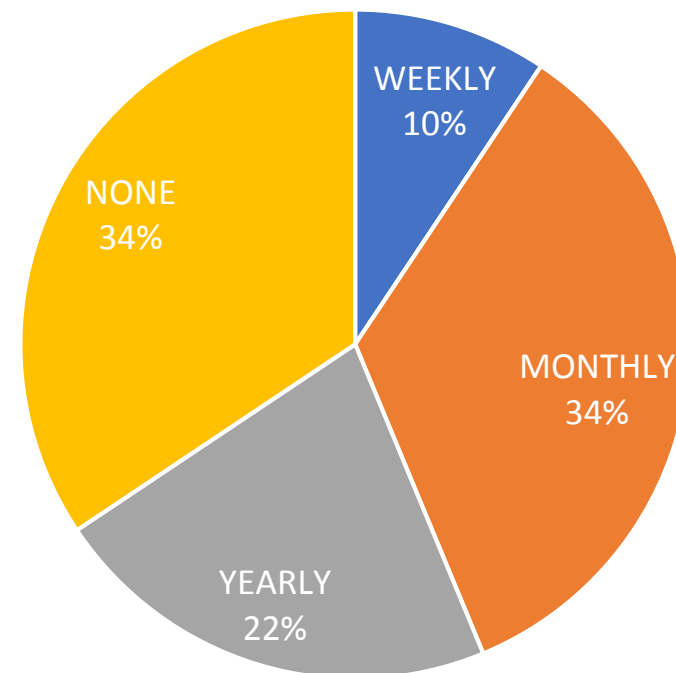


# Comment Form Responses

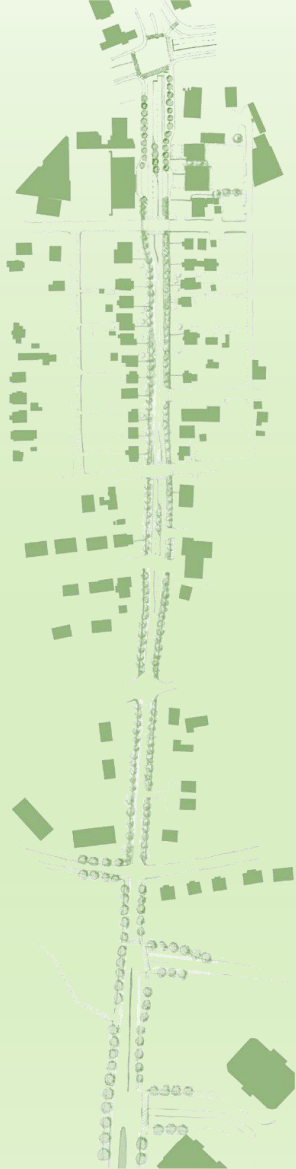
TRAVEL / COMMUTE BY BIKE



TRAVEL / COMMUTE USING LOCAL  
TRANSIT

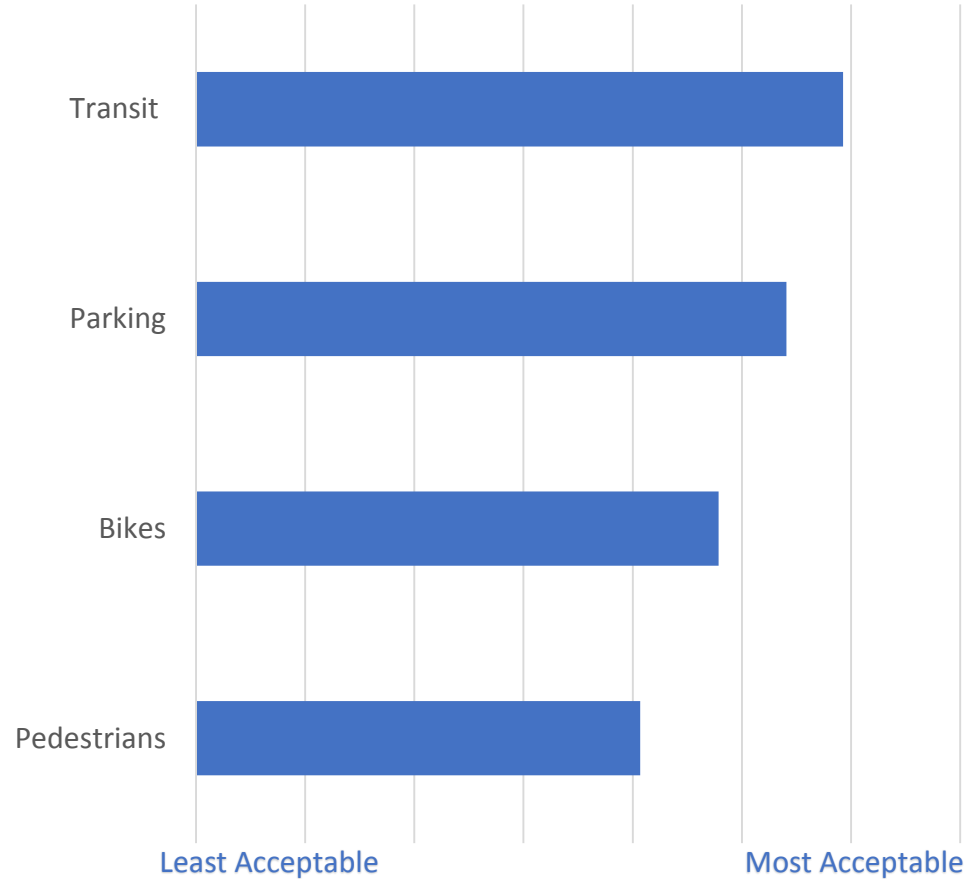






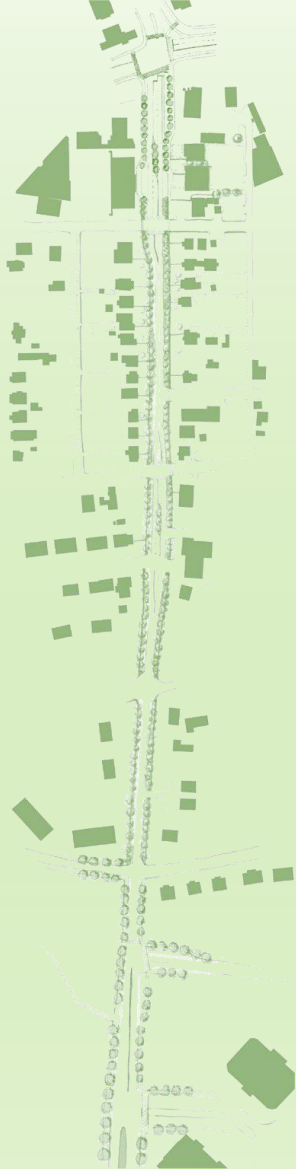
# Comment Form Responses

## Rating of Current Conditions



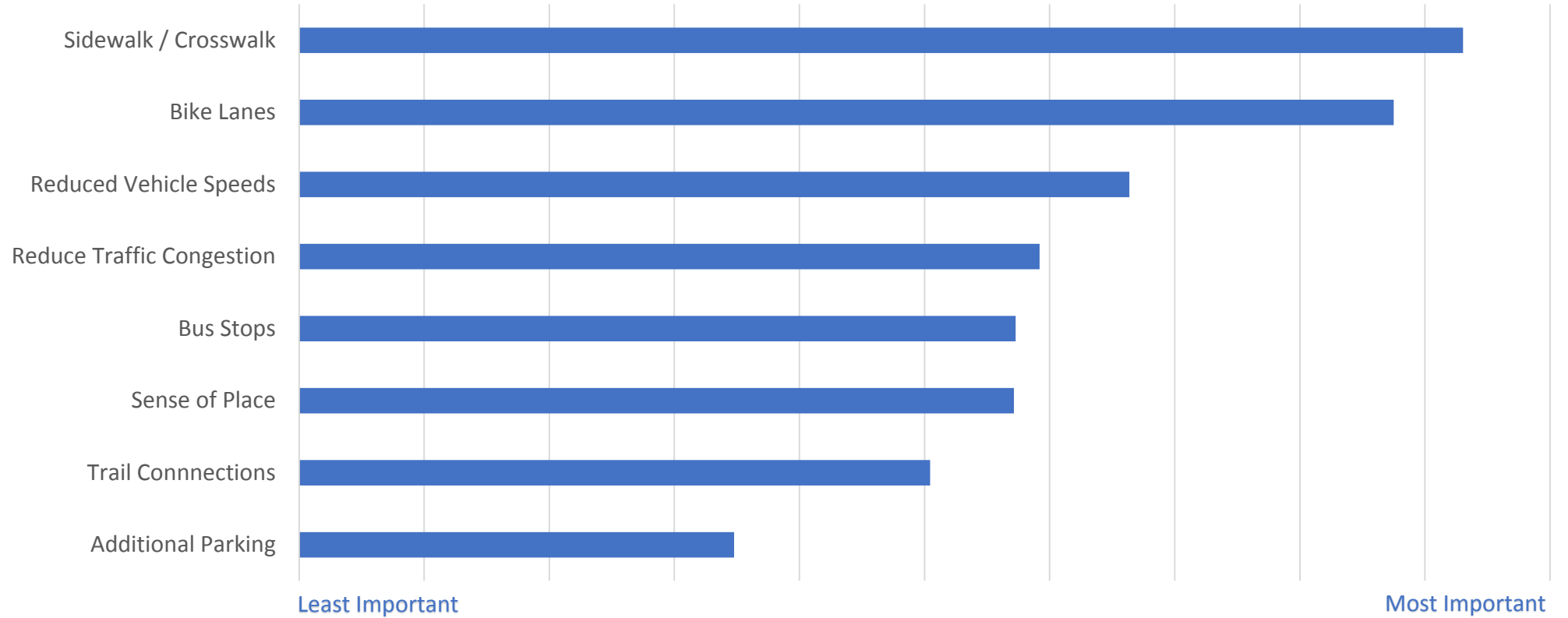
### Common Feedback:

- Biking is dangerous
- On street parking is not a neighborhood benefit (Primarily used by UVA)
- Site distances onto the street



# Comment Form Responses

## Importance of Future Conditions





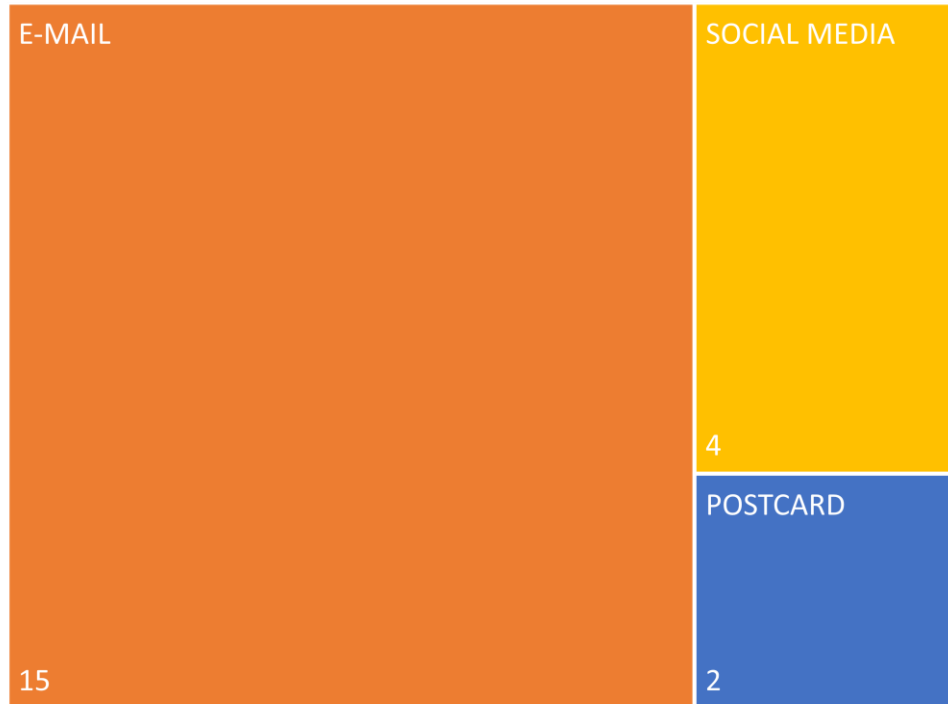
# Comment Form Responses

- Design Recommendations:
  - Want safe pedestrian connection at Piedmont/ Appletree/ Mimosa
  - Avoid reducing existing front lawns; Maintain existing Right-of-Way
  - Include streetlighting
  - Follow Streets at Work guidelines
  - Include protected bike lanes
  - Consider how to best utilize the paper alleys (parking or access)
  - Preserve trees and include green infrastructure
- Things They Would Like to See at Future Meetings:
  - Coordinate with the County to include Fontaine Research Park and the Route 29 ramps
  - Is UVA contributing to the solution?
  - Will Environmental Assessments be completed?
  - Production of sections, noting that multiple sections for the street might be required

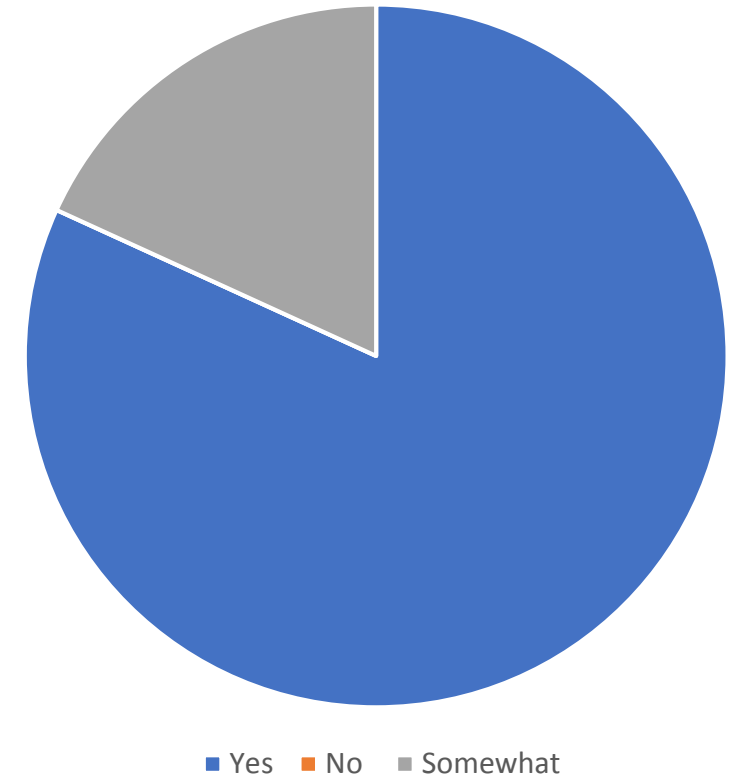
# Comment Form Responses

## How People Heard About the Meeting

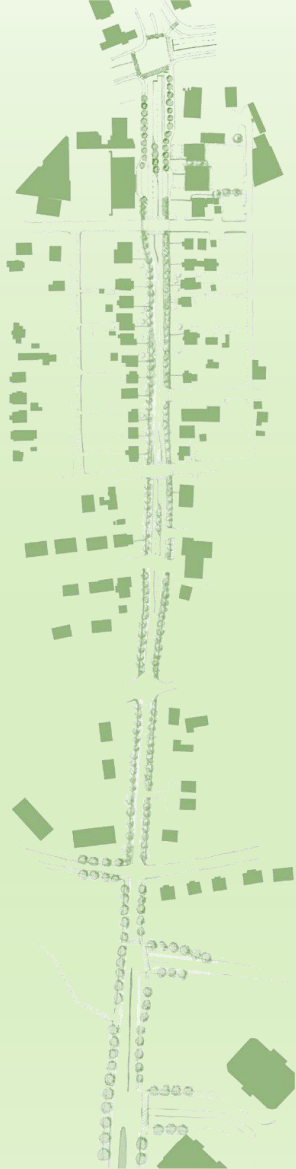
- POSTCARD
- E-MAIL
- WEBSITE
- SOCIAL MEDIA
- NEWS ARTICLE / MEDIA



## Was Staff Able to Answer Questions?







# Streetscape Activity

# Activity Introduction

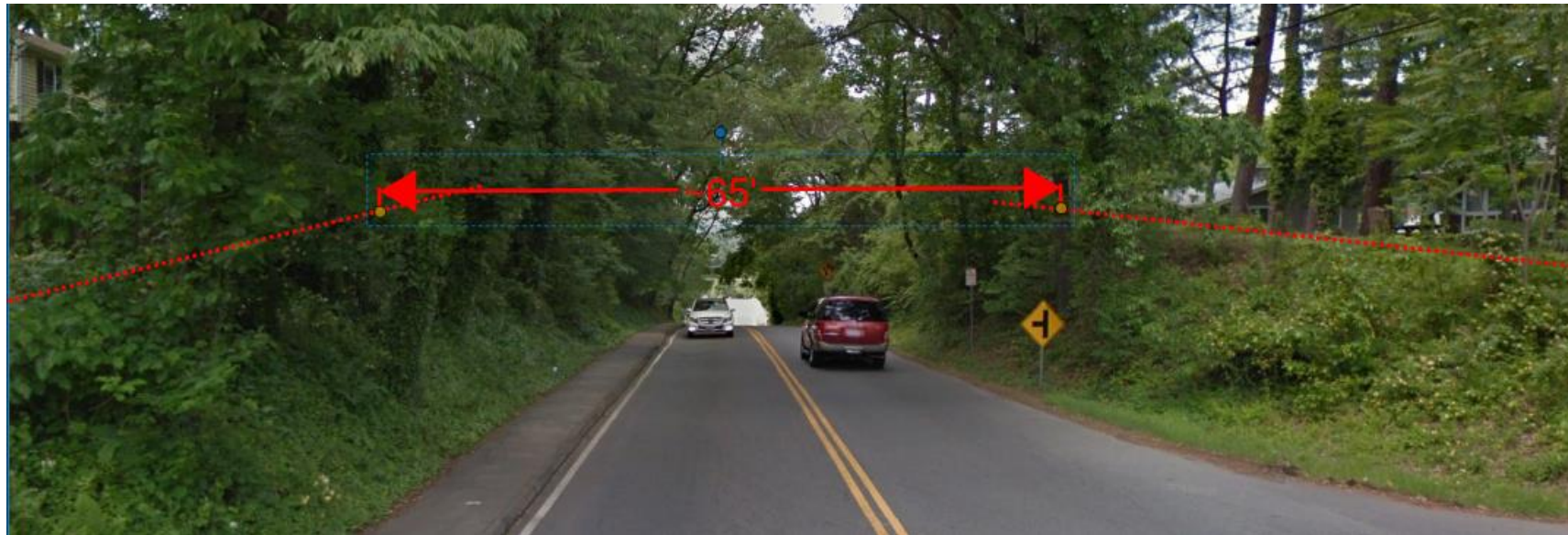
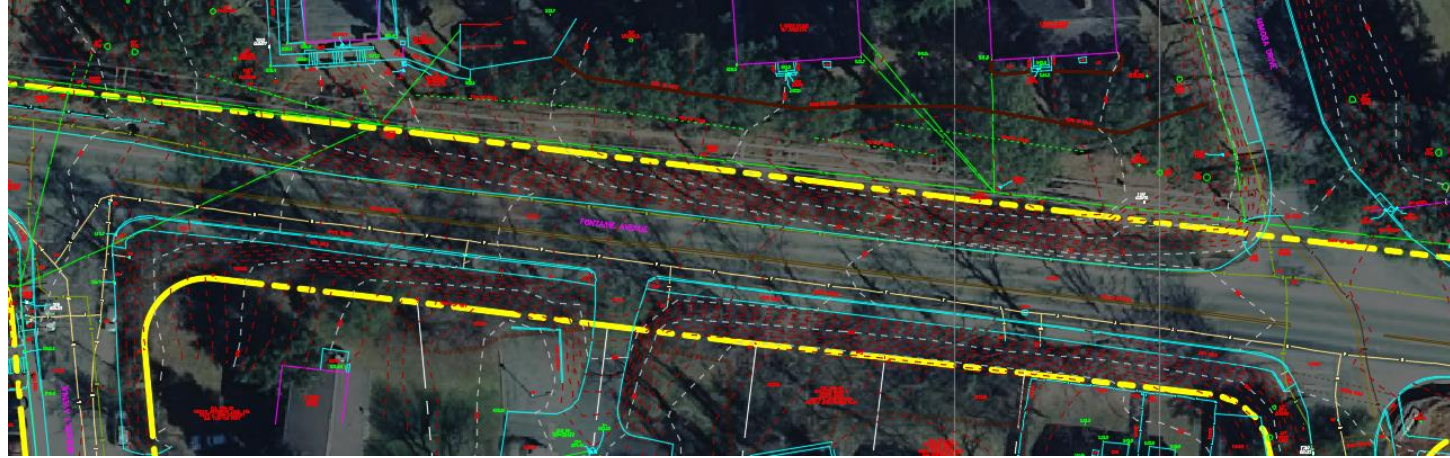




# Activity Introduction

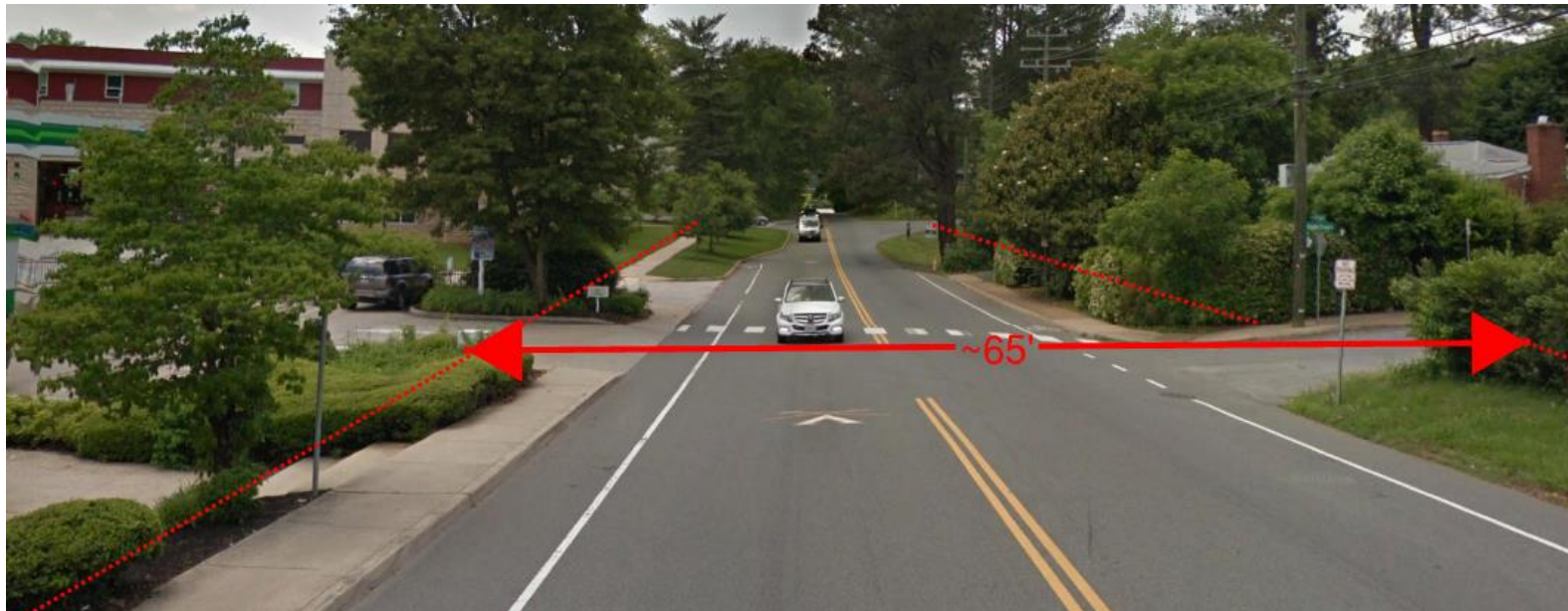


# Existing Right-of-Way (Near Summit)



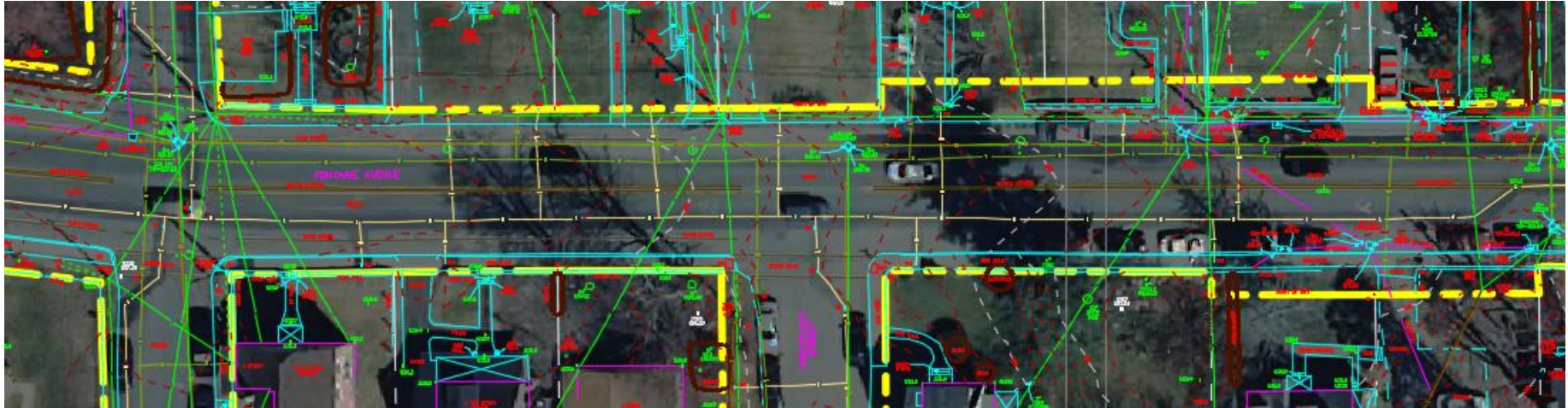


# Existing Right-of-Way (Near Fire Station)



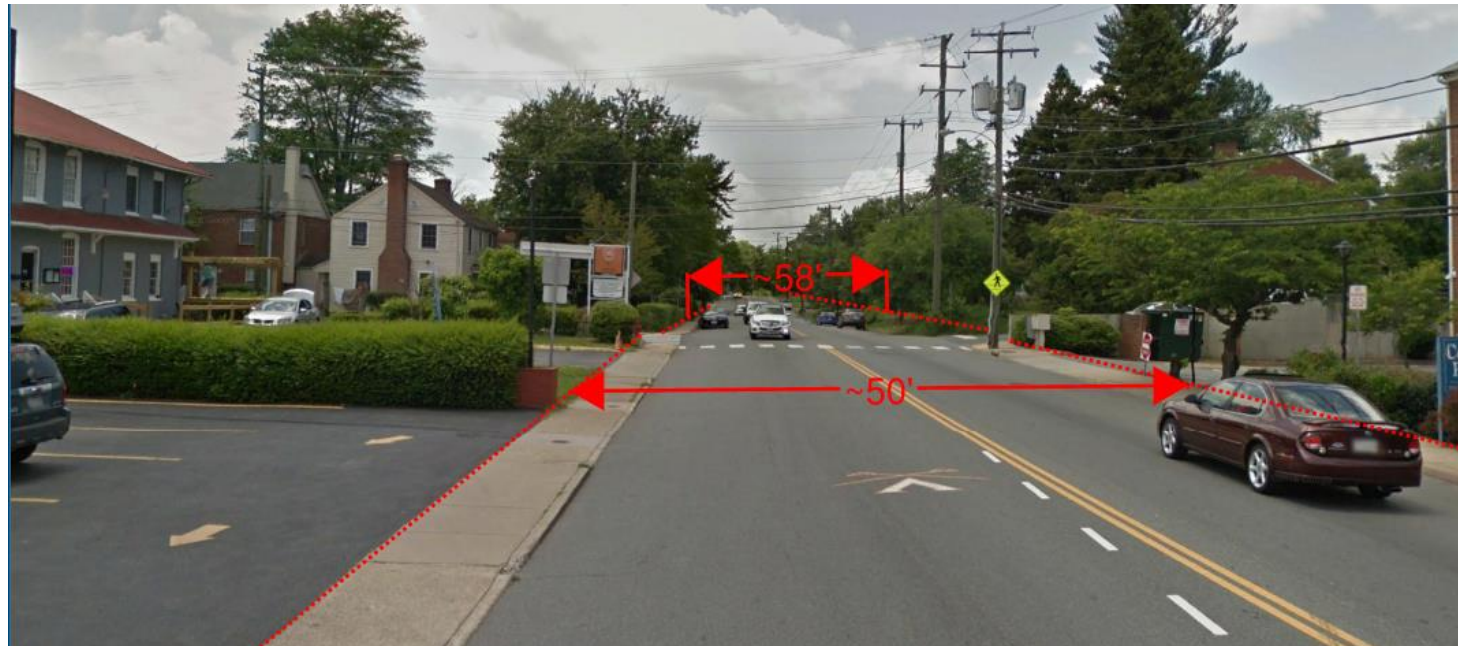
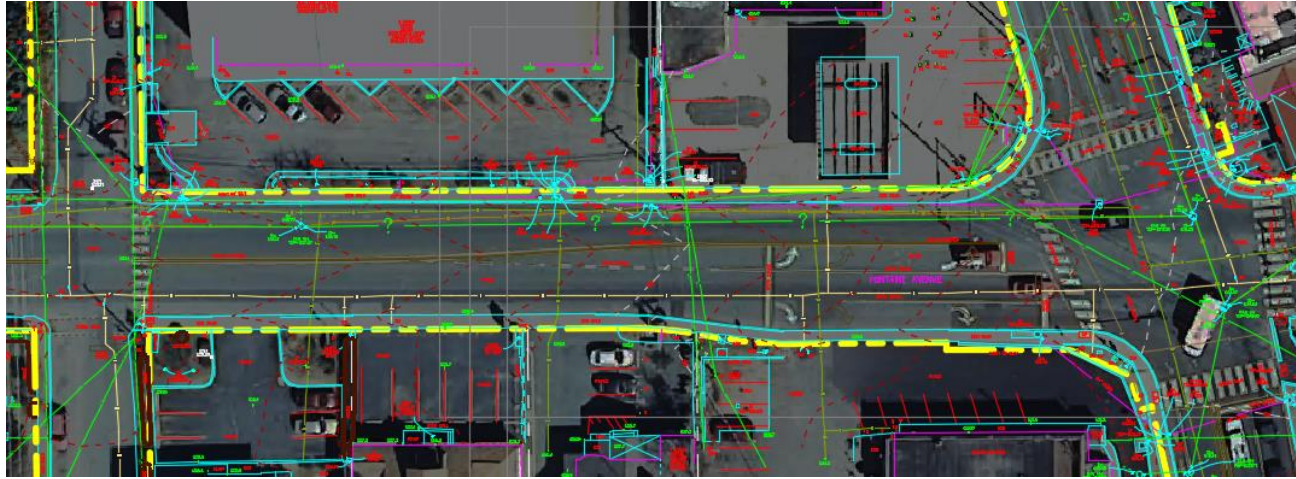


# Existing Right-of-Way (Near Montpelier)





# Existing Right-of-Way (Near Lewis)





# Next Steps

# Next Steps

- Steering Committee Meeting #3 – Late March 2019
- Public Workshop #2 – Late April / Early May 2019
- Concept Development

[www.fontainestreetscape.com](http://www.fontainestreetscape.com)





# Thank you!



*In Conjunction  
With*

**TOOLE**  
DESIGN